

FANS

Orientation & Motor Positions



Drive Arrangements

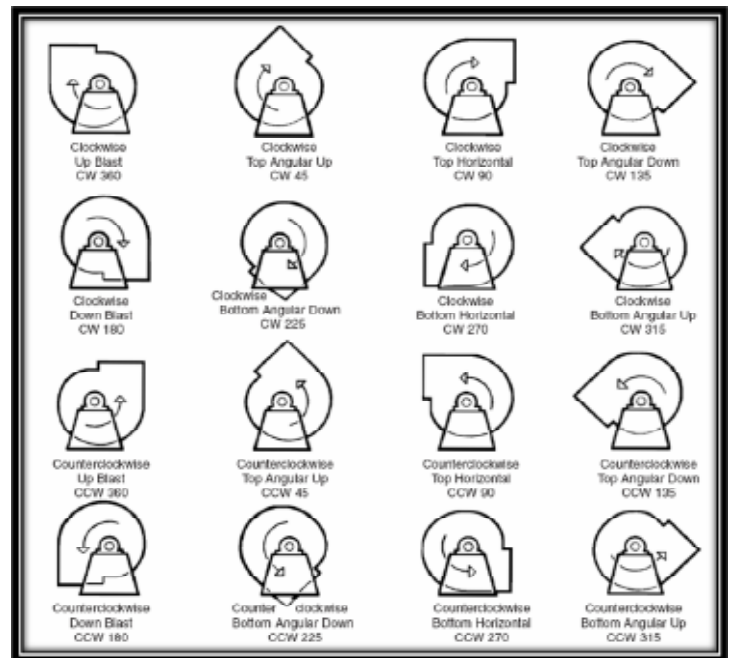
SW - Single Width	DW - Double Width	SI - Single Inlet	DI - Double Inlet	
ARR. 1 SWSI For belt drive or direct connection. Impeller overhung. Two bearings on base.	ARR. 2 SWSI For belt drive or direct connection. Impeller overhung. Bearings in bracket supported by fan housing.	ARR. 3 SWSI For belt drive or direct connection. One bearing on each side and supported by fan housing.	ARR. 3 DWDI For belt drive or direct connection. One bearing on each side and supported by fan housing.	ARR. 4 SWSI For direct drive. Impeller overhung on prime mover shaft. No bearings on fan. Prime mover base mounted or integrally connected.
ARR. 7 SWSI For belt drive or direct connection. Arrangement 3 plus base for prime mover.	ARR. 7 DWDI For belt drive or direct connection. Arrangement 3 plus base for prime mover.	ARR. 8 SWSI For belt drive or direct connection. Arrangement 1 plus extended base for prime mover.	ARR. 9 SWSI For belt drive. Impeller overhung, two bearings, with prime mover outside base.	ARR. 10 SWSI For belt drive. Impeller overhung two bearings, with prime mover inside base.

Notes:

Direction of rotation from drive side of fan.

Single inlet fans – drive side considered inside opposite fan inlet.

Double inlet fan with dual drive, drive side is that with higher power drive.



FOR MORE INFORMATION OR TO PLACE AN ORDER CONTACT IAC TODAY

PB223003

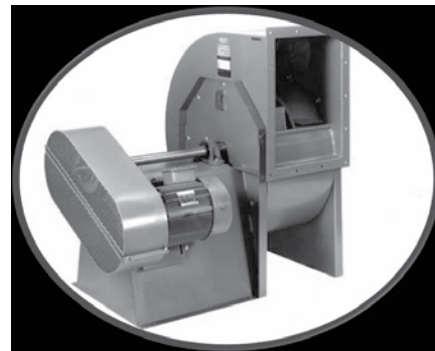
4800 Lamar Avenue / Mission, KS 66202 / USA 800.334.7431

www.iac-intl.com

Arrangement 9

Arrangement 9 SWSI

- Belt drive
- Impeller overhung
- Two bearings with prime mover outside base
- Lower Noise Levels than Direct Drive
- Higher Cost, but more Adjustability
- With non-standard motor locations on right-hand side.



Arrangement 4 Remote Mount Applications for Larger Dust Collectors

- Arrangement 4 SWSI
- Direct drive
- Impeller overhung on prime mover shaft
- No bearings on fan
- Prime mover base mounted or integrally directly connected





Arrangement 4

Wheel mounted directly on the motor shaft

- Wheel mounting to motor shaft, straight through with setscrews & keyway vs. taper lock bushings
- Inside hub vs. outside hub

Compact, Low cost

- Turbos are sold mostly in Arrangement 4, BC/baf to 36-1/2"
- We have supplied 600 BAF-SW with 100 HP in Arrangement 4

Maximum temperature 180 to 200 and 201 to 400 degrees F.

- We prefer to mount the motors
- Select for direct drive speeds only

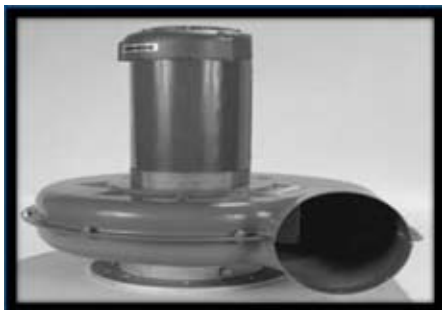
Direct Drive Speeds:

60 HZ (USA, Canada, Ect.)

Synchronous

3600	3425 to 3550
1800	1725 to 1785
1200	1120 to 1185
900	815 to 890

Arrangement 4HM-Most Commonly Used For Top Mount Dust Collectors and Oil Mist Collectors



- Arrangement 4HM (Horizontal Mount)
- Same as Arrangement 4