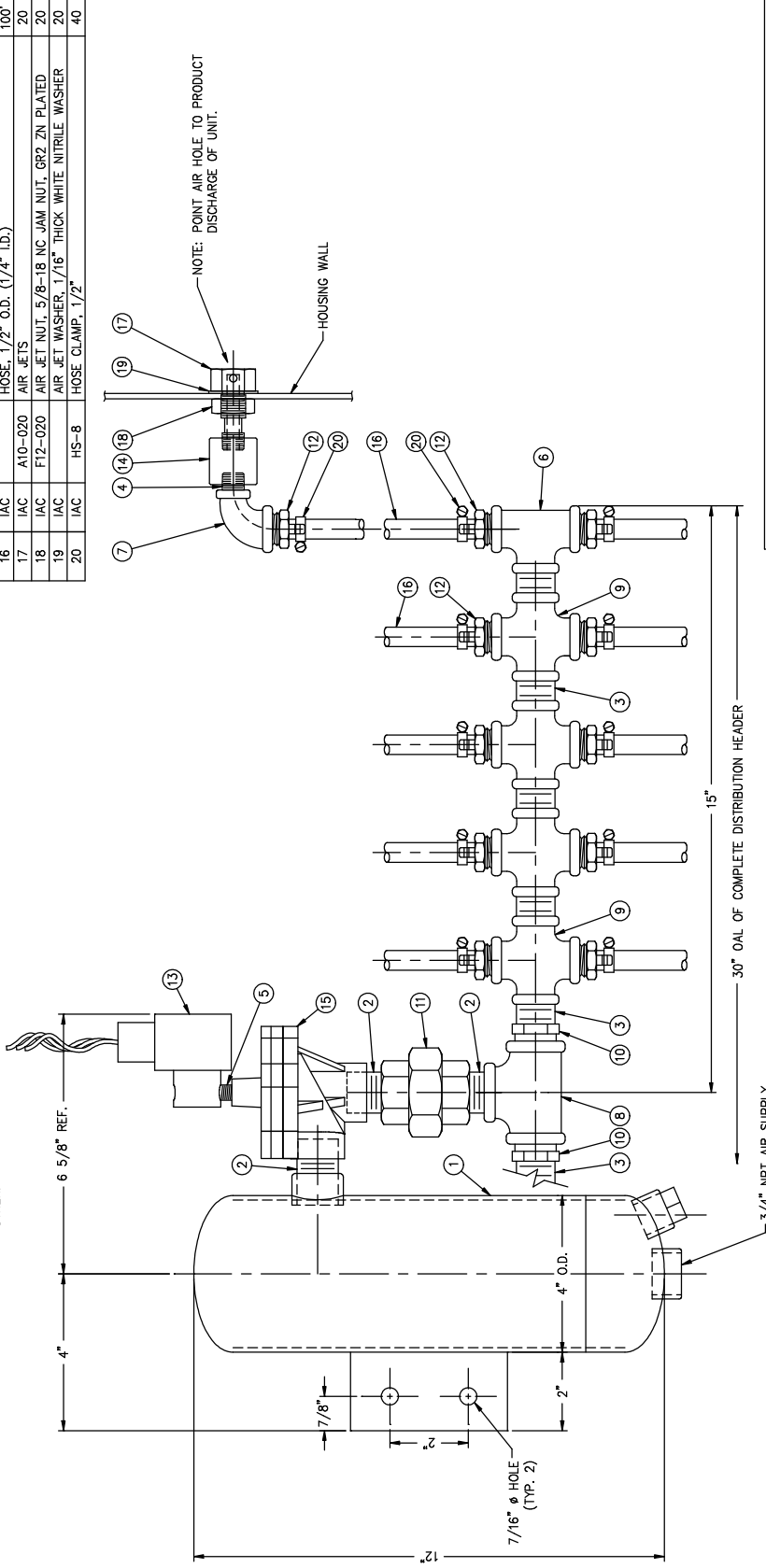


GENERAL NOTES:

- 1) MATERIAL PREP --  
 POWER TOOL CLEAN (SSPC-SP3) & SOLVENT WIPE (SSPC-SP1)  
 OTHER \_\_\_\_\_
- 2) FINISH SCHEDULE --  
 PLAIN  
 OTHER \_\_\_\_\_

- EXTERIOR -- PRIMER:  ENAMEL PRIMER (B50WZ1)  
 EPOXY PRIMER (B60V70/B62N71)  
 OTHER \_\_\_\_\_

- FINISH PAINTED:  BLUE ENAMEL (B54T104)  
 WHITE ENAMEL (B54W101)  
 WHITE EPOXY (B60V70/B62W101)  
 OTHER \_\_\_\_\_



ITEM	BY	PART NO.	DESCRIPTION	QTY
1	FAB		4" RESERVOIR ASSY (DWG #117-0002)	1
2	FAB		CLOSE NIPPLE, 3/4" NPT, CARBON STEEL	3
3	FAB		CLOSE NIPPLE, 1/2" NPT, CARBON STEEL	10
4	FAB		CLOSE NIPPLE, 1/4" NPT, CARBON STEEL	20
5	FAB		CLOSE NIPPLE, 1/8" NPT, CARBON STEEL	1
6	FAB		TEE, 1/2" NPT, CARBON STEEL	2
7	FAB		REDUCING EL, 1/2" NPT x 1/4" NPT, 90°, CARBON STEEL	20
8	FAB		TEE, 3/4" NPT, CARBON STEEL	1
9	FAB		CROSS, 1/2" NPT, CARBON STEEL	8
10	FAB		REDUCING BUSHING, 3/4" TO 1/2"	2
11	FAB		UNION, 3/4" NPT, CARBON STEEL	1
12	IAC	125HBL-4-8	MALE CONNECTOR, 1/2" NPT, 1/4" HOSE BARB	40
13	IAC	828262	SOLENOID VALVE, 2 WAY, NEMA 4, 110 VAC	1
14	IAC	A10-010	CHECK VALVE	20
15	IAC	8353C33	DIAPHRAGM VALVE, 3/4"	1
16	IAC	A10-020	HOSE, 1/2" O.D. (1/4" I.D.)	100'
17	IAC		AIR JETS	20
18	IAC	F12-020	AIR JET NUT, 5/8-18 NC, JAM NUT, GR2, ZN PLATED	20
19	IAC		AIR JET WASHER, 1/16" THICK WHITE NITRILE WASHER	20
20	IAC	HS-8	HOSE CLAMP, 1/2"	40

**IAC**  
Industrial Accessories Company  
5018 HALEY  
OVERLAND PARK, KANSAS 66203  
(913) 384-5011 Fax: (913) 384-6977

**IAC STANDARD**

DATE: 8/5/98  
 DRAWN BY: PJR  
 CHECKED BY: [blank]  
 APPROVED BY: [blank]

PROJECT NO: 117-0005  
 SHEET NO: 117-0005  
 OF: 1

DESCRIPTION: AIR JET MANIFOLD ASSY.  
 FOR 20 AIR JETS

This material is the property of INDUSTRIAL ACCESSORIES COMPANY. It is to be used only for the purpose intended. It is not to be reproduced, published, or distributed in any form without the written consent of INDUSTRIAL ACCESSORIES COMPANY. Overland Park, Kansas.

--- DO NOT MODIFY THIS DRAWING ELECTRONICALLY ---  
 NOTE: PROCEDURE FOR CHANGING, ADDING OR DELETING INFORMATION ON IAC DRAWINGS.

- A) COPY REVISION TRIANGLE NEXT TO YOUR REQUESTED CHANGE & TYPE YOUR REVISION NEXT TO THE SYMBOL. →
- B) REDLINE A HARDCOPY OF THIS DRAWING AND NEXT DAY AIR TO IAC.