


Help note BAGHOUSE – BOTTOM LOAD PULSE JET – TUBULAR BAG – STYLE III

MODEL: 	FILTER LENGTH (IN.)	FILTER AREA (SQ.FT.)	NOMINAL DIMENSIONS (IN.)										NO. OF VALVES	*EST'D SHIP WT. (LB.)
			C		HOPPER ANGLE=45°		HOPPER ANGLE=60°		HOPPER ANGLE=70°		HOPPER ANGLE=70°			
			A	B	D	E (STYLE II)	D	E (STYLE III)	D	E (STYLE III)	D	E (STYLE III)		
36TB-BHI-9-S6	36"	44	24"	42"	54"	10"	64"	16"	70"	24"	78"	3	410	
58TB-BHI-9-S6	58"	71	24"	64"	76"	10"	86"	16"	92"	24"	100"	3	540	
72TB-BHI-9-S6	72"	88	24"	78"	90"	10"	100"	16"	106"	24"	114"	3	670	
96TB-BHI-9-S6	96"	117	24"	102"	114"	10"	124"	16"	130"	24"	138"	3	760	
58TB-BHI-16-S6	58"	126	32"	64"	76"	14"	90"	23"	99"	35"	111"	4	780	
72TB-BHI-16-S6	72"	156	32"	78"	90"	14"	104"	23"	113"	35"	125"	4	880	
84TB-BHI-16-S6	84"	182	32"	90"	102"	14"	116"	23"	125"	35"	137"	4	980	
96TB-BHI-16-S6	96"	208	32"	102"	114"	14"	128"	23"	137"	35"	149"	4	1070	
58TB-BHI-25-S6	58"	196	40"	64"	76"	18"	94"	30"	106"	46"	122"	5	1040	
72TB-BHI-25-S6	72"	243	40"	78"	90"	18"	108"	30"	120"	46"	136"	5	1170	
96TB-BHI-25-S6	96"	325	40"	102"	114"	18"	132"	30"	144"	46"	160"	5	1410	
108TB-BHI-25-S6	108"	365	40"	114"	126"	18"	144"	30"	156"	46"	172"	5	1520	
120TB-BHI-25-S6	120"	406	40"	126"	138"	18"	156"	30"	168"	46"	184"	5	1640	
58TB-BHI-36-S6	58"	282	48"	64"	76"	22"	98"	37"	113"	57"	133"	6	1320	
96TB-BHI-36-S6	96"	467	48"	102"	114"	22"	136"	37"	151"	57"	171"	6	1770	
108TB-BHI-36-S6	108"	526	48"	114"	126"	22"	148"	37"	163"	57"	183"	6	1910	
120TB-BHI-36-S6	120"	584	48"	126"	138"	22"	160"	37"	175"	57"	195"	6	2050	

* C.S. CONSTRUCTION

NO. OF BAGS	HOUSING FLANGE PATTERN			
	DIMENSIONS (IN.)		QUANTITIES	
	A	F	G	H
9	24"	28"	5	28
16	32"	36"	7	36
25	40"	44"	9	44
36	48"	52"	11	52

INTERSTITIAL ARE BASED ON A BAG CROSS SECTIONAL AREA OF 0.21 SQ. FT.

NO. OF BAGS	HOUSING INNER DIM. (IN.)	INTERSTITIAL AREA (SQ. FT.)
9	23 3/4"	2.03
16	31 3/4"	3.64
25	39 3/4"	5.72
36	47 3/4"	8.27

MATERIALS OF CONSTRUCTION

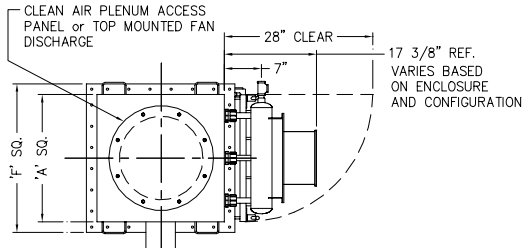
- BIN VENTS AVAILABLE IN:**
- CARBON STEEL
 - STAINLESS STEEL
 - ALUMINUM

STANDARD STRUCTURAL RATINGS

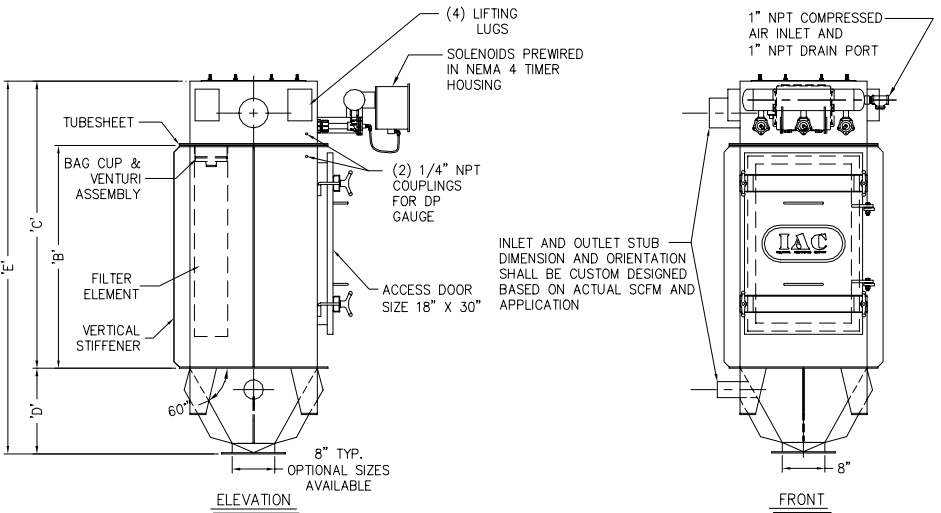
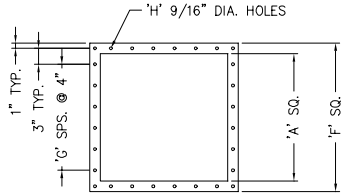
- PEASURE RATING: 20" W.C.
- VACUUM RATING: 20" W.C.

OTHER FILTER STYLES

- FILTER MEDIA AVAILABLE IN:**
- PAPER CARTRIDGE
 - SPUN BOND PLEATED ELEMENT



PLAN VIEW




ELEVATION

FRONT

GENERAL NOTES: FILTER SPECIFICATIONS FOR STANDARD MODELS

- Design Pressure: Square/Rectangular units: ± 20" W.C. standard design pressure
Cylindrical (Round) units: 17" Hg design vacuum; up to 14.9 PSIG pressure
- Air Pressure Requirement: 70 to 120 PSIG
- Prewired and Prewired at factory
- Efficiency: 0.02 grs/DSCF maximum outlet emission
- Tubular style unit uses a standard 6.0" diameter filter bag; this design is shown on G.A. drawing
- Power Requirements: 120V, 1 Ph, 60 HZ
- Casing Construction: 12 ga. up to 1/4" plate depending on pressure rating and application
- Sheet Construction: 3/16" thick, carbon steel; 1/4" x 5" stiffeners
- Stiffeners: 1/4" x 3" Flat Bar, carbon steel
- Flanges and Rings: 70 x 2" Flat Bar, carbon steel
- 100% Galvanized, 12 wire, corrosion resistant bag support cages
- Painted Surfaces Metal Prep: Solvent wiped- SSPC- SP1; and, Power tool cleaned SSPC- SP3
- Exterior Surfaces: 2 coats; 1 epoxy 2-part primer and 1 finish coat of high solids industrial enamel
- 100% Exterior Welded; ASME certified weld specifications and procedures
- 1/2" Black Nylon or Copper Interconnecting Tubing
- Asco or Goyen Pulse Valves- cast aluminum
- Hardware- Grade 5, plated; silicone caulk provided
- Tubsheet is removable; bolted between upper and lower flanges; over 330 bags, tubsheet is seal welded to casing
- Diaphragm Pulse Valve Sizes: 3 rows up to 6 rows- 3/4" diaphragm
7 rows and greater- 1 1/2" double diaphragm valve
- NEMA 4, dust and watertight, electrical instruments and panels
- Air Pressure Gauge- 0 to 150 PSIG
- Aluminum Bulkhead Fittings
- IAC Side (Bottom) Load and Walk-In CAP design units
- Doors Dimensions :18" width by "x" Height; Standard Heights: 30", 38", 60", and 72"
- Top Door Style Units: Lift-Off Doors with Top Deck Full Perimeter Handrail and 4" Kickplate
- Top Load Style Units: Inspection Door located in Hopper (Style 3) or Housing (Style 2)
Standard Sizes: 10", 16", 20", and 24" diameter
- "DP" Differential Pressure Gauge (Magneheic)
- Sloped Roof- Top Door Style Units
- Door hold down assembly stud on top door units shall be 304 SST
- Drawing to be used for Lay-Out and Engineering purposes only.
- Style 3 (Hopper Section) Discharge - Optional Sizes Available

<p>This material is the property of INDUSTRIAL ACCESSORIES COMPANY and should not be reproduced, published or disclosed to others without authorization. The material shall not be used in any way against or detrimental to INDUSTRIAL ACCESSORIES COMPANY, Mission, Kansas.</p>		 <p>Industrial Accessories Company 4800 LAMAR MISSION, KS 66202 (913) 384-5511 fax (913) 384-6577</p>	
<p>PROJECT: FILTER INFORMATION TABLE</p>		<p>DATE SENT: 11/11/02</p>	<p>LAST REV'D: _____</p>
<p>DESCRIPTION: BAGHOUSE: BOTTOM LOAD 9 TO 36 BAGS</p>		<p>PART NO. _____</p>	<p>REV'D BY: _____</p>
<p>DRAWING NO. CD311-01</p>		<p>PROPOSAL NO. _____</p>	

Help note BAGHOUSE – BOTTOM LOAD PULSE JET – TUBULAR BAG – STYLE III

MODEL:	FILTER LENGTH (IN.)	FILTER AREA (SQ.FT.)	NOMINAL DIMENSIONS (IN.)										NO. OF VALVES	*EST'D SHIP. WT. (LB.)
			A	B	C (STYLE II)	HOPPER ANGLE=45°		HOPPER ANGLE=60°		HOPPER ANGLE=70°				
						D	E (STYLE III)	D	E (STYLE III)	D	E (STYLE III)			
96TB-BHI-49:S6	96"	636	56"	102"	118"	26"	144"	44"	162"	68"	186"	7	2210	
108TB-BHI-49:S6	108"	716	56"	114"	130"	26"	156"	44"	174"	68"	198"	7	2370	
120TB-BHI-49:S6	120"	795	56"	126"	142"	26"	168"	44"	186"	68"	210"	7	2540	
144TB-BHI-49:S6	144"	954	56"	150"	166"	26"	192"	44"	210"	68"	234"	7	2860	
96TB-BHI-64:S6	96"	831	64"	102"	118"	30"	148"	51"	169"	79"	197"	8	2630	
108TB-BHI-64:S6	108"	935	64"	114"	130"	30"	160"	51"	181"	79"	209"	8	2820	
120TB-BHI-64:S6	120"	1039	64"	126"	142"	30"	172"	51"	193"	79"	221"	8	3002	
144TB-BHI-64:S6	144"	1247	64"	150"	166"	30"	196"	51"	217"	79"	245"	8	3376	
120TB-BHI-81:S6	120"	1315	72"	126"	142"	34"	176"	58"	200"	90"	232"	9	3510	
144TB-BHI-81:S6	144"	1578	72"	150"	166"	34"	200"	58"	224"	90"	256"	9	3930	
120TB-BHI-100:S6	120"	1623	80"	126"	142"	38"	180"	68"	210"	101"	243"	10	4090	
144TB-BHI-100:S6	144"	1948	80"	150"	166"	38"	204"	68"	234"	101"	267"	10	4560	

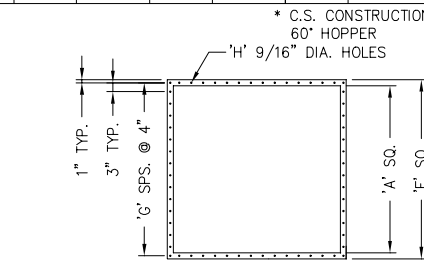
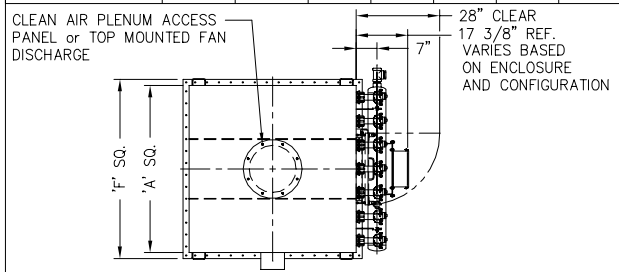
INTERSTITIAL AREA BASED ON A BAG CROSS SECTIONAL AREA OF 0.21 SQ.FT.

NO. OF BAGS	HOUSING INNER DIM. (IN.)	INTERSTITIAL AREA (SQ. FT.)
49	55 3/4"	11.29
64	63 3/4"	14.78
81	71 3/4"	18.74
100	79 3/4"	23.17

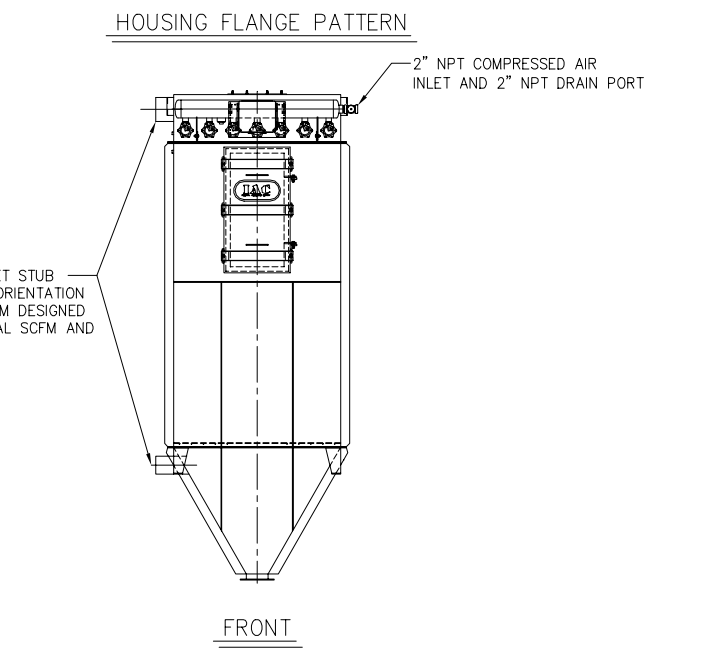
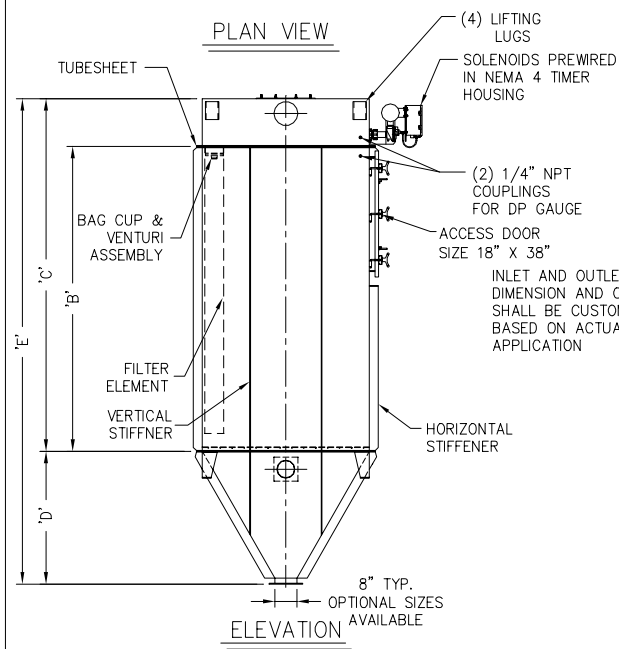
STYLE II (HOUSING) FLANGE PATTERN

NO. OF BAGS	DIMENSIONS (IN.)			
	A	F	G	H
49	56"	60"	13	60
64	64"	68"	15	68
81	72"	76"	17	76
100	80"	84"	19	84

- GENERAL NOTES: FILTER SPECIFICATIONS FOR STANDARD MODELS**
- Design Pressure: Square/Rectangular units: ± 20" W.C. standard design pressure
Cylindrical (Round) units: 17" Hg design vacuum; up to 14.9 PSIG pressure
 - Air Pressure Requirement: 70 to 120 PSIG
 - Prewired and Prepped at factory
 - Efficiency: 0.02 grs/DSCF maximum outlet emission
 - Tubular style unit uses a standard 6.0" diameter filter bag; this design is shown on G.A. drawing
 - Power Requirements: 120V, 1 Ph, 60 HZ
 - Casing Construction: 12 ga. up to 3/4" plate depending on pressure rating and application
 - TubeSheet Construction: 3/16" thick, carbon steel; 1/4" x 5" stiffeners
 - Stiffeners: 1/4" x 3" Flat Bar, carbon steel
 - Flanges and Rings: 1/4" x 2" Flat Bar, carbon steel
 - 100% Galvanized, 12 wire, corrosion resistant bag support cages
 - Painted Surfaces Metal Prep: Solvent wiped- SSPC- SP1; and, Power tool cleaned SSPC- SP3
 - Exterior Surfaces: 2 coats; 1 epoxy 2-part primer and 1 finish coat of high solids industrial enamel
 - 100% Exterior Welded; ASME certified weld specifications and procedures
 - 1/4" Black Nylon or Copper Interconnecting Tubing
 - Asco or Goyen Pulse Valves- cast aluminum
 - Hardware- Grade 5, plated; silicone caulk provided
 - TubeSheet is removable; bolted between upper and lower flanges; over 330 bags, tubeSheet is seal welded to casing
 - Diaphragm Pulse Valve Sizes: 3 rows up to 6 rows- 3/4" diaphragm valve
7 rows and greater- 1 1/2" double diaphragm valve
 - NEMA 4, dust and watertight, electrical instruments and panels
 - Air Pressure Gauge- 0 to 150 PSIG
 - Aluminum Bulkhead Fittings
 - IAC Side (Bottom) Load and Walk-In CAP design units
Doors Dimensions :18" width by "x" Height; Standard Heights: 30", 38", 60", and 72"
 - Top Door Style Units: Lift-Off Doors with Top Deck Full Perimeter Handrail and 4" Kickplate
 - Top Load Style Units: Inspection Door located in Hopper (Style 3) or Housing (Style 2)
Standard Sizes: 10", 16", 20", and 24" diameter
 - "DP" Differential Pressure Gauge (Magnehelic)
 - Sloped Roof- Top Door Style Units
 - Door hold down assembly stud on top door units shall be 304 SST
 - Drawing to be used for Lay-Out and Engineering purposes only.
 - Style 3 (Hopper Section) Discharge - Optional Sizes Available



- MATERIALS OF CONSTRUCTION**
BAGHOUSES AVAILABLE IN:
- CARBON STEEL
 - STAINLESS STEEL
 - ALUMINUM
- STANDARD STRUCTURAL RATINGS**
- PRESSURE RATING: 20" W.C.
 - VACUUM RATING: 20" W.C.
- OTHER FILTER STYLES**
FILTER MEDIA AVAILABLE IN:
- PAPER CARTRIDGE
 - SPUN BOND PLEATED ELEMENT



This material is the property of INDUSTRIAL ACCESSORIES COMPANY and should not be reproduced, published or disclosed to others without authorization. The material shall not be used in any way against or detrimental to INDUSTRIAL ACCESSORIES COMPANY, Mission, Kansas.

Industrial Accessories Company
4800 LAMAR
MISSION, KS 66202
(913) 384-5511 fax (913) 384-6577

PROJECT	DATE SENT	LAST REV'D	
FILTER INFORMATION TABLE		11/11/02	
DESCRIPTION BAGHOUSE: SIDE REMOVAL, 60 SERIES SIZES: 49 TO 100 BAGS MODEL: REFER TO TABLE ABOVE	PART NO.	REV'D BY	PROPOSAL NO.
			DRAWING NO. CD311-02