

BAGHOUSE – TOP LOAD PULSE JET – TUBULAR BAG – STYLE III

MODEL:	FILTER LENGTH (IN.)	FILTER AREA (SQ.FT.)	NOMINAL DIMENSIONS (IN.)				NO. OF VALVES	*EST'D SHIP. WT. (LB.)
			HOPPER ANGLE=60°					
			A	B	C	D (STYLE III)		
58TB-BHWT-36:S6	58"	282	53"	53"	41"	169"	6	2090
96TB-BHWT-36:S6	96"	467	53"	53"	41"	245"	6	2260
108TB-BHWT-36:S6	108"	526	53"	53"	41"	269"	6	2430
120TB-BHWT-36:S6	120"	584	53"	53"	41"	293"	6	2600
96TB-BHWT-49:S6	96"	636	61"	61"	48"	170"	7	2530
108TB-BHWT-49:S6	108"	716	61"	61"	48"	182"	7	2700
120TB-BHWT-49:S6	120"	795	61"	61"	48"	194"	7	2880
144TB-BHWT-49:S6	144"	954	61"	61"	48"	218"	7	3240
96TB-BHWT-64:S6	96"	831	69"	69"	55"	177"	8	2970
108TB-BHWT-64:S6	108"	935	69"	69"	55"	189"	8	3180
120TB-BHWT-64:S6	120"	1039	69"	69"	55"	201"	8	3380
144TB-BHWT-64:S6	144"	1247	69"	69"	55"	225"	8	3780
120TB-BHWT-81:S6	120"	1315	77"	77"	64"	210"	9	3990
144TB-BHWT-81:S6	144"	1578	77"	77"	64"	234"	9	4440
120TB-BHWT-100:S6	120"	1623	85"	87"	71"	217"	10	4540
144TB-BHWT-100:S6	144"	1948	85"	87"	71"	241"	10	5040
120TB-BHWT-121:S6	120"	1964	93"	95"	78"	224"	11	5120
144TB-BHWT-121:S6	144"	2357	93"	95"	78"	248"	11	5670

* C.S. CONSTRUCTION
60° HOPPER

NO. OF BAGS	STYLE II (HOUSING) FLANGE PATTERN							
	DIMENSIONS (IN.)							
	A	B	G	H	J	K	L	M
36	29"	29"	33"	33"	3 1/2"	6	6	32
49	61"	61"	65"	65"	3 1/2"	14	14	64
64	69"	69"	73"	73"	3 1/2"	16	16	72
81	77"	79"	81"	83"	2 1/2"	18	19	82
100	85"	87"	89"	91"	2 1/2"	20	21	90
121	93"	95"	97"	99"	2 1/2"	22	23	98

MATERIALS OF CONSTRUCTION

BAGHOUSES AVAILABLE IN:

- CARBON STEEL
- STAINLESS STEEL
- ALUMINUM

STANDARD STRUCTURAL RATINGS

- PRESSURE RATING: 20" W.C.
- VACUUM RATING: 20" W.C.

OTHER FILTER STYLES

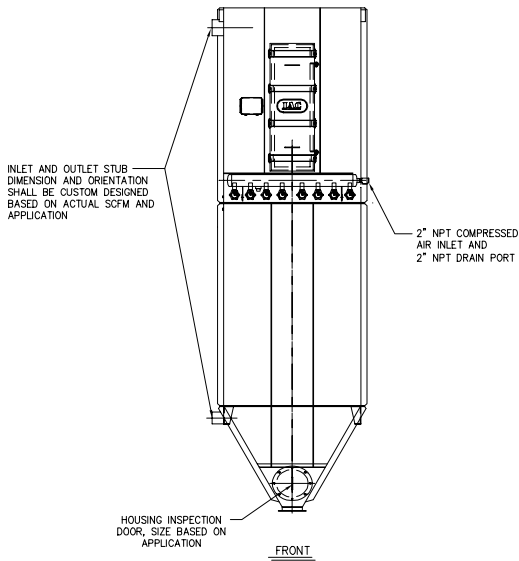
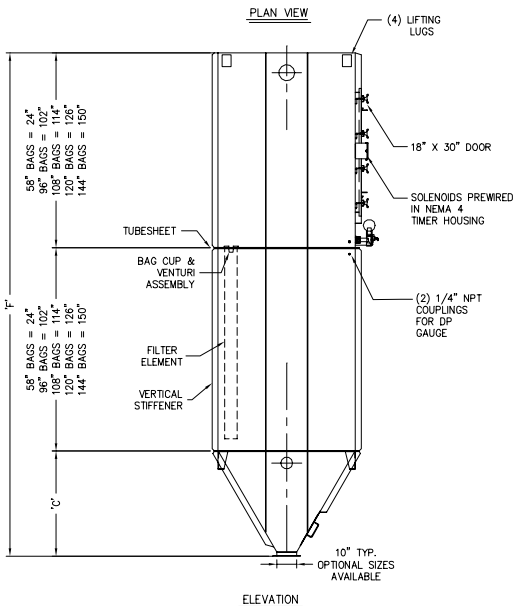
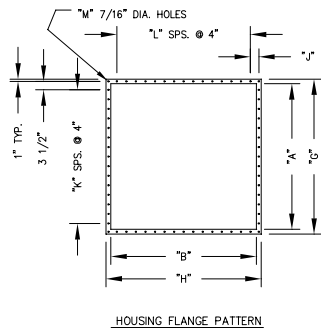
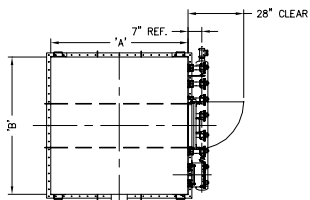
FILTER MEDIA AVAILABLE IN:

- PAPER CARTRIDGE
- SPUN BOND PLEATED ELEMENT

GENERAL NOTES: FILTER SPECIFICATIONS FOR STANDARD MODELS

1. Design Pressure: Square/Rectangular units: ± 20" W.C. standard design pressure
Cylindrical (Round) units: 17" Hg design vacuum; up to 14.9 PSIG pressure
2. Air Pressure Requirement: 70 to 120 PSIG
3. Prewired and Pripiped at factory
4. Efficiency: 0.02 grs./DSCF maximum outlet emission
5. Tubular style unit uses a standard 6.0" diameter filter bag; this design is shown on G.A. drawing
6. Power Requirements: 120V, 1 Ph, 60 HZ
7. Casing Construction: 12 ga. up to 1/4" plate depending on pressure rating and application
8. Tubesheet Construction: 3/16" thick, carbon steel; 1/4" x 5" stiffeners
9. Stiffeners: 1/4" x 3" Flat Bar, carbon steel
10. Flanges and Rings: 1/4" x 2" Flat Bar, carbon steel
11. 100% Galvanized, 12 wire, corrosion resistant bag support cages
12. Painted Surfaces Metal Prep: Solvent wiped- SSPC- SP1; and, Power tool cleaned SSPC- SP3
13. Exterior Surfaces: 2 coats; 1 epoxy 2-part primer and 1 finish coat of high solids industrial enamel
14. 100% Exterior Welded; ASME certified weld specifications and procedures
15. 1/4" Black Nylon or Copper Interconnecting Tubing
16. Asco or Goyen Pulse Valves- cast aluminum
17. Hardware- Grade 5, plated; silicone caulk provided
18. Tubesheet is removable; bolted between upper and lower flanges; over 330 bags, tubesheet is seal welded to casing
19. Diaphragm Pulse Valve Sizes: 3 rows up to 6 rows- 3/4" diaphragm valve
7 rows and greater- 1 1/2" double diaphragm valve
20. NEMA 4, dust and watertight, electrical instruments and panels
21. Air Pressure Gauge- 0 to 150 PSIG
22. Aluminum Bulkhead Fittings
23. IAC Side (Bottom) Load and Walk-In CAP design units
Doors Dimensions :18" width by "x" Height; Standard Heights: 30", 38", 60", and 72"
24. Top Door Style Units: Lift-Off Doors with Top Deck Full Perimeter Handrail and 4" Kickplate
25. Top Load Style Units: Inspection Door located in Hopper (Style 3) or Housing (Style 2)
Standard Sizes: 10", 16", 20", and 24" diameter
26. "DP" Differential Pressure Gauge (Magneheic)
27. Sloped Roof- Top Door Style Units
28. Door hold down assembly stud on top door units shall be 304 SST
29. Drawing to be used for Lay-Out and Engineering purposes only.
30. Style 3 (Hopper Section) Discharge - Optional Sizes Available

Help note



This material is the property of INDUSTRIAL ACCESSORIES COMPANY and should not be reproduced, published or disclosed to others without authorization. The material shall not be used in any way against or detrimental to INDUSTRIAL ACCESSORIES COMPANY, Mission, Kansas.

IAC Industrial Accessories Company
4800 LAMAR
MISSION, KS 66202
(913) 384-5511 fax (913) 384-6577

PROJECT	DATE SENT	LAST REVISED
FILTER INFORMATION TABLE		
DESIGNER	DRAWN BY	REVISIONS
BAGHOUSE: TOP REMOVAL, 60 SERIES SIZES: 36 TO 121 BAGS MODEL: REFER TO TABLE ABOVE		
CD313-01		

BAGHOUSE — TOP LOAD WALK IN PULSE JET — TUBULAR BAG — STYLE III

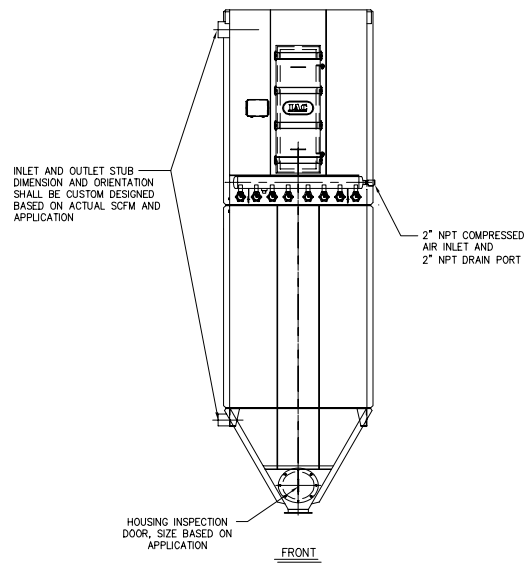
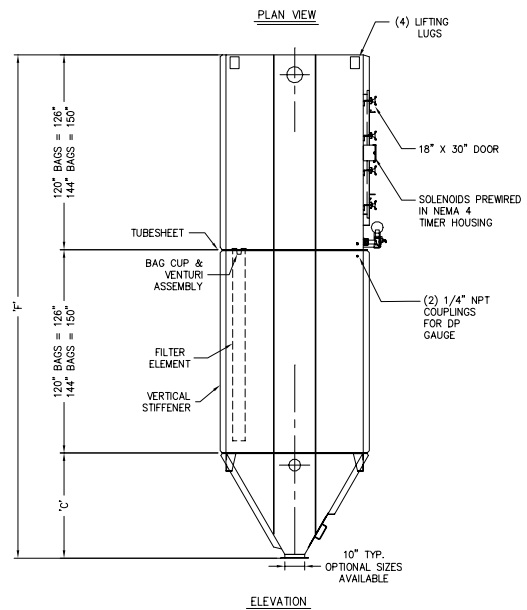
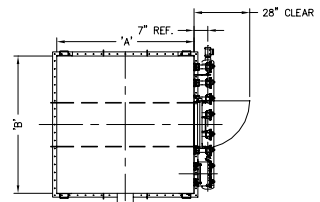
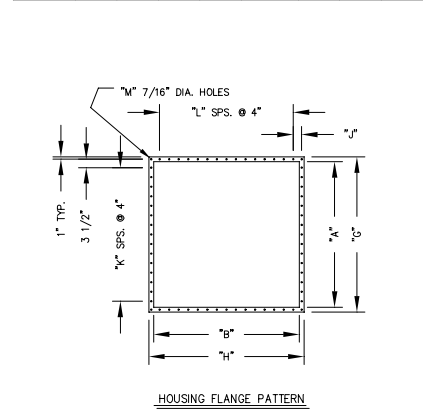
MODEL:	FILTER LENGTH (IN.)	FILTER AREA (SQ.FT.)	NOMINAL DIMENSIONS (IN.)				NO. OF VALVES	*EST'D SHIP. WT. (LB.)
			A	B	HOPPER ANGLE=60° C (STYLE III)	D (STYLE III)		
120TB-BHWT-144:S6	120"	2337	101"	105"	85"	337"	12	8200
144TB-BHWT-144:S6	144"	2805	101"	105"	85"	385"	12	8500
120TB-BHWT-169:S6	120"	2738	109"	113"	91"	343"	13	8800
144TB-BHWT-169:S6	144"	3285	109"	113"	91"	391"	13	9150
120TB-BHWT-196:S6	120"	3175	117"	121"	98"	350"	14	9400
144TB-BHWT-196:S6	144"	3810	117"	121"	98"	398"	14	9800
120TB-BHWT-225:S6	120"	3645	125"	131"	107"	359"	15	10000
144TB-BHWT-225:S6	144"	4374	125"	131"	107"	407"	15	10450
120TB-BHWT-256:S6	120"	4147	133"	139"	114"	366"	16	10600
144TB-BHWT-256:S6	144"	4977	133"	139"	114"	414"	16	11200

NOTE: "C" DIMENSION BASED ON A 10" SQ. ID. OUTLET * C.S. CONSTRUCTION 60° HOPPER

Help note



NO. OF BAGS	DIMENSIONS (IN.)					QUANTITIES		
	A	B	G	H	J	K	L	M
144	101"	105"	105"	109"	3 1/2"	24	25	106
169	109"	113"	114"	117"	3 1/2"	26	27	114
196	117"	121"	121"	125"	3 1/2"	28	29	122
225	125"	131"	129"	135"	2 1/2"	30	32	132
256	133"	139"	137"	143"	2 1/2"	32	34	140



- MATERIALS OF CONSTRUCTION**
 BAGHOUSES AVAILABLE IN:
 • CARBON STEEL
 • STAINLESS STEEL
 • ALUMINUM
- STANDARD STRUCTURAL RATINGS**
 • PRESSURE RATING: 20" W.C.
 • VACUUM RATING: 20" W.C.
- OTHER FILTER STYLES**
 FILTER MEDIA AVAILABLE IN:
 • PAPER CARTRIDGE
 • SPUN BOND PLEATED ELEMENT

GENERAL NOTES: FILTER SPECIFICATIONS FOR STANDARD MODELS

- Design Pressure: Square/Rectangular units: ± 20" W.C. standard design pressure
Cylindrical (Round) units: 17" Hg design vacuum; up to 14.9 PSIG pressure
- Air Pressure Requirement: 70 to 120 PSIG
- Efficiency: 0.02 grs/DSCF maximum outlet emission
- Tubular style unit uses a standard 6.0" diameter filter bag; this design is shown on G.A. drawing
- Power Requirements: 120V, 1 Ph, 60 HZ
- Casing Construction: 12 ga. up to 1/4" plate depending on pressure rating and application
- Tube-sheet Construction: 3/16" thick, carbon steel; 1/4" x 5" stiffeners
- Stiffeners: 1/4" x 3" Flat Bar, carbon steel
- Flanges and Rings: 1/4" x 2" Flat Bar, carbon steel
- 100% Galvanized, 12 wire, corrosion resistant bag support cages
- Painted Surfaces Metal Prep: Solvent wiped- SSPC- SP1; and, Power tool cleaned SSPC- SP3
- Exterior Surfaces: 2 coats; 1 epoxy 2-part primer and 1 finish coat of high solids industrial enamel
- 100% Exterior Welded; ASME certified weld specifications and procedures
- 1/4" Black Nylon or Copper Interconnecting Tubing
- Asco or Goyen Pulse Valves- cast aluminum
- Hardware- Grade 5, plated; silicone caulk provided
- Tube-sheet is removable; bolted between upper and lower flanges; over 330 bags, tube-sheet is seal welded to casing
- Diaphragm Pulse Valve Sizes: 3 rows up to 6 rows- 3/4" diaphragm valve
7 rows and greater- 1 1/2" double diaphragm valve
- NEMA 4, dust and watertight, electrical instruments and panels
- Air Pressure Gauge- 0 to 150 PSIG
- Aluminum Bulkhead Fittings
- IAC Side (Bottom) Load and Walk-In CAP design units
Doors Dimensions :18" width by "x" Height; Standard Heights: 30", 36", 60", and 72"
- Top Door Style Units: Lift-Off Doors with Top Deck Full Perimeter Handrail and 4" Kickplate
- Top Load Style Units: Inspection Door located in Hopper (Style 3) or Housing (Style 2)
Standard Sizes: 10", 16", 20", and 24" diameter
- "DP" Differential Pressure Gauge (Magnehelic)
- Sloped Roof- Top Door Style Units
- Door hold down assembly stud on top door units shall be 304 SST
- Drawing to be used for Lay-Out and Engineering purposes only.
- Style 3 (Hopper Section) Discharge - Optional Sizes Available

This material is the property of INDUSTRIAL ACCESSORIES COMPANY and should not be reproduced, published or disclosed to others without authorization. The material shall not be used in any way against or detrimental to INDUSTRIAL ACCESSORIES COMPANY, Mission, Kansas.

Industrial Accessories Company
 4800 LAMAR
 MISSION, KS 66202
 (913) 384-5511 fax (913) 384-6577

PROJECT: BAGHOUSE: TOP REMOVAL, 60 SERIES
 SIZES: 144 TO 256 BAGS
 MODEL: REFER TO TABLE ABOVE

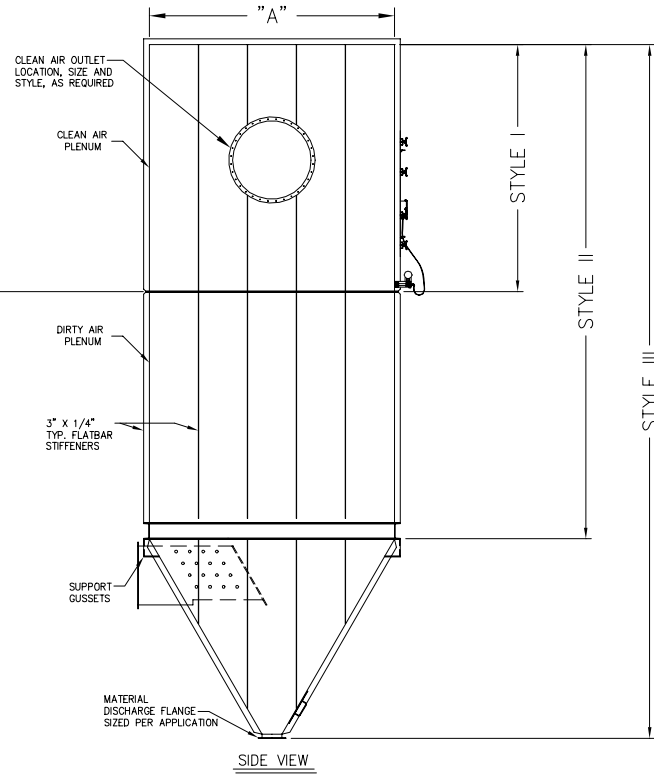
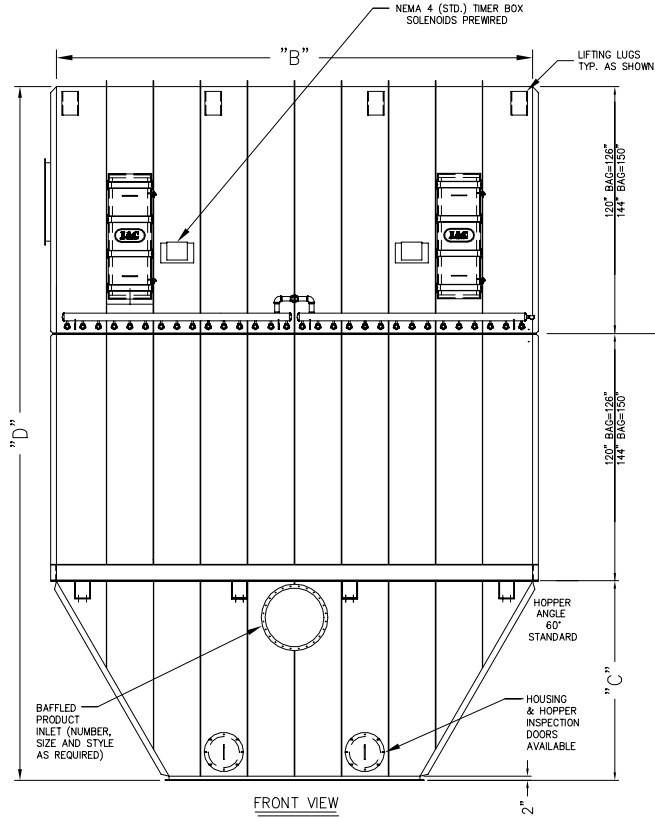
FILTER INFORMATION TABLE		DATE SENT	LAST REV
DESIGNER	DATE	11/11/02	
DRAWING NO.	CD313-02		

Help note



MODEL:	FILTER LENGTH (IN.)	FILTER AREA (SQ.FT.)	NOMINAL DIMENSIONS (IN.)				NO. OF VALVES	NO. OF AIR HEADERS	*EST'D SHIP. WT. (LB.)
			A	B	HOPPER ANGLE=60° C	D (STYLE III)			
120TB-BHWT-288;S6	120"	4666	125"	144"	102"	354"	18	1	12,500
144TB-BHWT-288;S6	144"	5599	125"	144"	102"	402"	18	1	15,000
120TB-BHWT-384;S6	120"	6221	125"	194"	102"	354"	24	2	16,500
144TB-BHWT-384;S6	144"	7465	125"	194"	102"	402"	24	2	19,000
120TB-BHWT-480;S6	120"	7776	125"	242"	102"	354"	30	2	19,900
144TB-BHWT-480;S6	144"	9331	125"	242"	102"	402"	30	2	22,400

* C.S. CONSTRUCTION
60" HOPPER



- NOTES:
- 1.) THIS DRAWING IS NOT CERTIFIED FOR FIELD CONSTRUCTION. USE FOR GENERAL ARRANGEMENT ONLY
 - 2.) STRUCTURALLY DESIGNED TO WITHSTAND 20" W.C. POSITIVE AND NEGATIVE PRESSURE.
 - 3.) AVAILABLE IN CARBON STEEL, STAINLESS STEEL AND ALUMINUM. CARBON STEEL UNITS ARE PROVIDED WITH ONE PRIME COAT OF PAINT.
 - 4.) AVAILABLE WITH FELTED TUBULAR FILTER BAGS OR, SPUN BOND PLEATED ELEMENTS
 - 5.) INLET AND OUTLET SIZES WILL BE DETERMINED AND SIZED FOR SPECIFIC APPLICATIONS.
 - 6.) HIGH TEMPERATURE DESIGNS AVAILABLE.

This material is the property of INDUSTRIAL ACCESSORIES COMPANY and should not be reproduced, published or disclosed to others without authorization. The material shall not be used in any way against or detrimental to INDUSTRIAL ACCESSORIES COMPANY, Mission, Kansas.

IAC
INDUSTRIAL ACCESSORIES COMPANY

Industrial Accessories Company
4800 LAMAR
MISSION, KS 66202
(913) 384-5511 fax (913) 384-6577

PROJECT: FILTER INFORMATION TABLE - WALK-IN	DATE SENT:	LAST REV'D: 11/11/02
DESCRIPTION: BAGHOUSE: TOP REMOVAL, 60 SERIES SIZES: 288 TO 480 BAGS MODEL: REFER TO TABLE ABOVE	PART NO.:	REV'D BY:
DRAWING NO.: CD317-01	PROPOSAL NO.:	LAST REV'D:

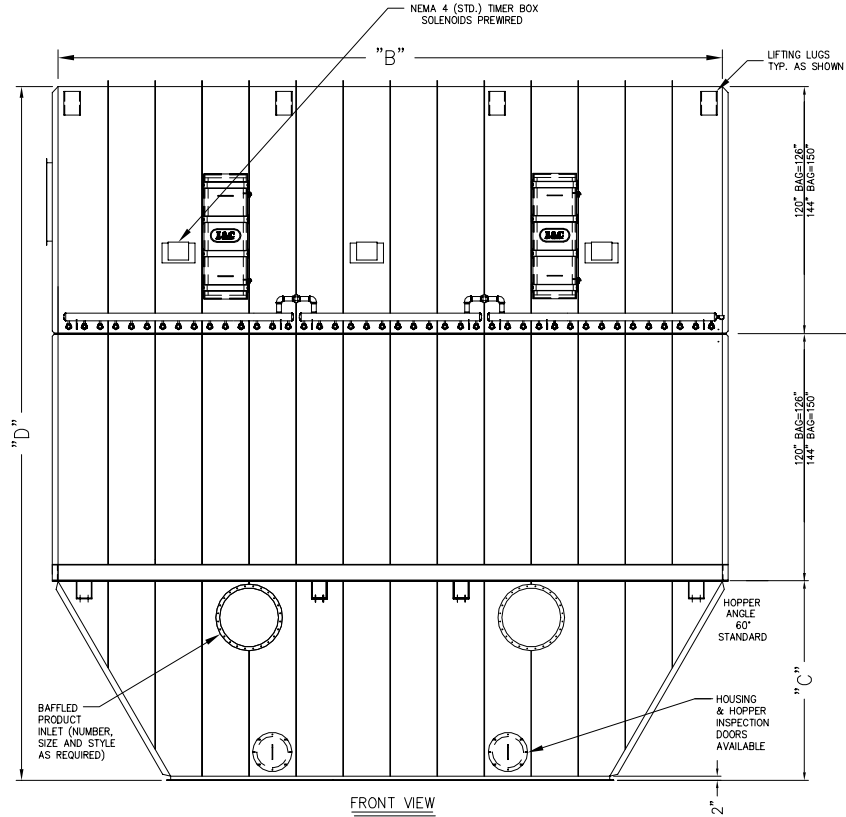
Help note



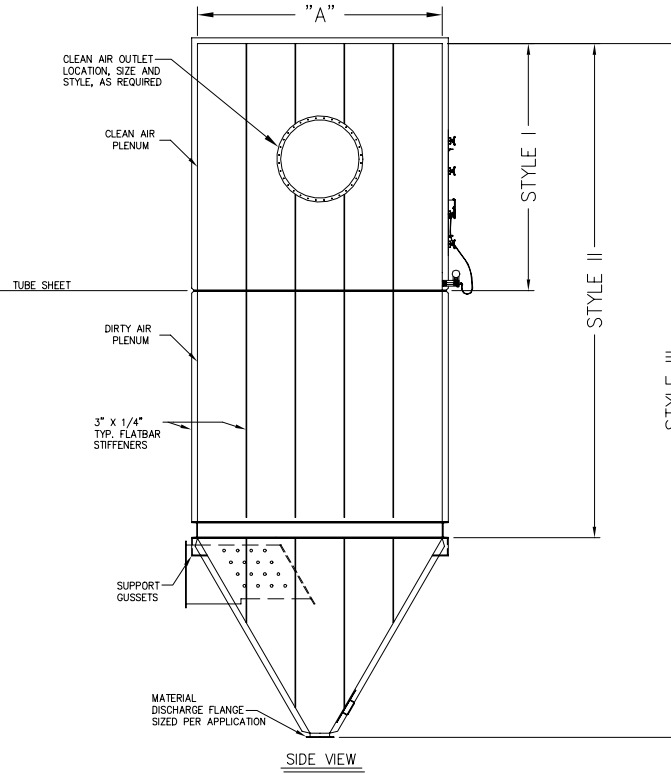
BAGHOUSE – TOP LOAD WALK IN PULSE JET – TUBULAR BAG – STYLE III

MODEL:	FILTER LENGTH (IN.)	FILTER AREA (SQ.FT.)	NOMINAL DIMENSIONS (IN.)				NO. OF VALVES	NO. OF AIR HEADERS	*EST'D SHIP. WT. (LB.)
			A	B	HOPPER ANGLE=60° C	D (STYLE III)			
120TB-BHWT-576:S6	120"	9331	125"	290"	102"	354"	36	2	22,600
144TB-BHWT-576:S6	144"	11197	125"	290"	102"	402"	36	2	25,300
120TB-BHWT-672:S6	120"	10886	125"	340"	102"	354"	42	3	26,000
144TB-BHWT-672:S6	144"	13064	125"	340"	102"	402"	42	3	28,700

* C.S. CONSTRUCTION
60" HOPPER



FRONT VIEW



SIDE VIEW

NOTES:

- 1.) THIS DRAWING IS NOT CERTIFIED FOR FIELD CONSTRUCTION. USE FOR GENERAL ARRANGEMENT ONLY
- 2.) STRUCTURALLY DESIGNED TO WITHSTAND 20" W.C. POSITIVE AND NEGATIVE PRESSURE.
- 3.) AVAILABLE IN CARBON STEEL, STAINLESS STEEL AND ALUMINUM. CARBON STEEL UNITS ARE PROVIDED WITH ONE PRIME COAT OF PAINT.
- 4.) AVAILABLE WITH FELTED TUBULAR FILTER BAGS OR, SPUN BOND PLEATED ELEMENTS
- 5.) INLET AND OUTLET SIZES WILL BE DETERMINED AND SIZED FOR SPECIFIC APPLICATIONS.
- 6.) HIGH TEMPERATURE DESIGNS AVAILABLE.

This material is the property of INDUSTRIAL ACCESSORIES COMPANY and should not be reproduced, published or disclosed to others without authorization. The material shall not be used in any way against or detrimental to INDUSTRIAL ACCESSORIES COMPANY, Mission, Kansas.

Industrial Accessories Company
4800 LAMAR
MISSION, KS 66202
(913) 384-5511 fax (913) 384-6577

PROJECT	DATE SENT	LAST REV'D
<p>FILTER INFORMATION TABLE – WALK-IN</p>		11/11/02
DESCRIPTION	PART NO.	PROPOSAL NO.
BAGHOUSE: TOP REMOVAL, 60 SERIES SIZES: 576 TO 672 BAGS MODEL: REFER TO TABLE ABOVE		
DRAWING NO.		
		CD317-02

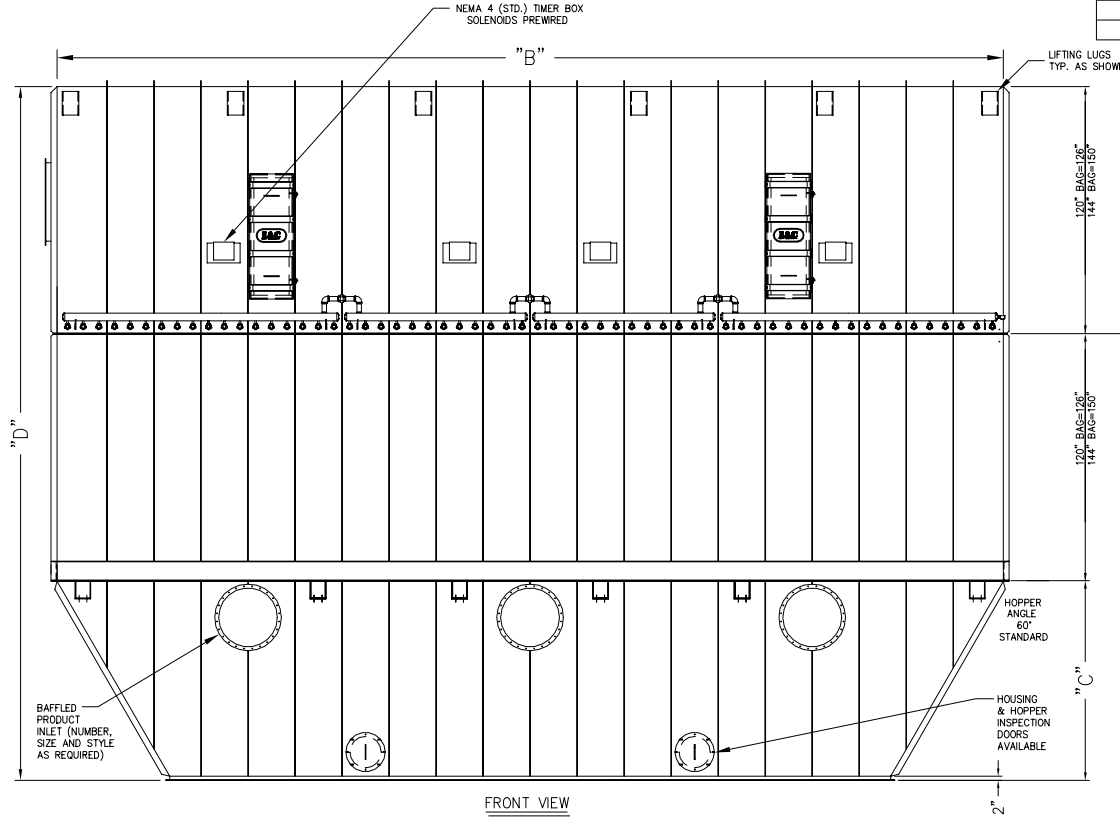
Help note



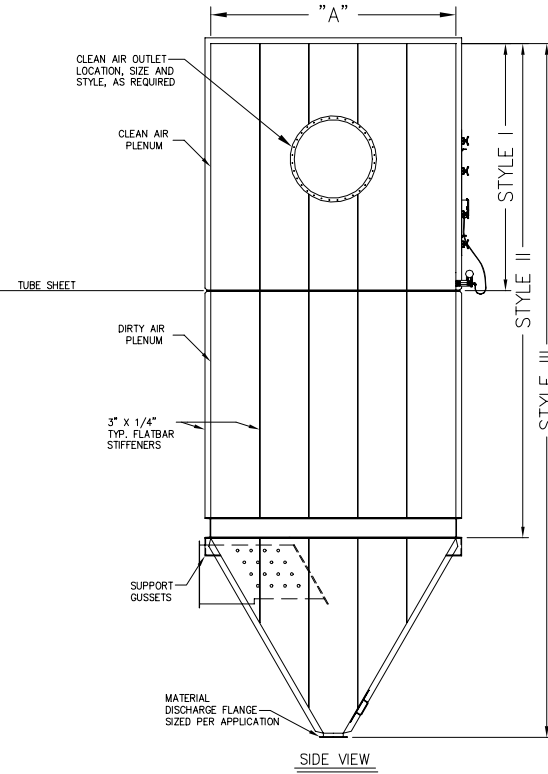
BAGHOUSE – TOP LOAD WALK IN PULSE JET – TUBULAR BAG – STYLE III

MODEL:	FILTER LENGTH (IN.)	FILTER AREA (SQ.FT.)	NOMINAL DIMENSIONS (IN.)				NO. OF VALVES	NO. OF AIR HEADERS	*EST'D SHIP. WT. (LB.)
			A	B	HOPPER ANGLE=60° C	D (STYLE III)			
120TB–BHWT–768: S6	120"	12442	125"	388"	102"	354"	48	3	28,000
144TB–BHWT–768: S6	144"	14930	125"	388"	102"	402"	48	3	30,700
120TB–BHWT–864: S6	120"	13997	125"	436"	102"	354"	54	3	31,400
144TB–BHWT–864: S6	144"	16796	125"	436"	102"	402"	54	3	34,100
120TB–BHWT–960: S6	120"	15552	125"	486"	102"	354"	60	4	34,800
144TB–BHWT–960: S6	144"	18662	125"	486"	102"	402"	60	4	37,500

* C.S. CONSTRUCTION
60" HOPPER



FRONT VIEW



SIDE VIEW

NOTES:

- 1.) THIS DRAWING IS NOT CERTIFIED FOR FIELD CONSTRUCTION. USE FOR GENERAL ARRANGEMENT ONLY
- 2.) STRUCTURALLY DESIGNED TO WITHSTAND 20" W.C. POSITIVE AND NEGATIVE PRESSURE.
- 3.) AVAILABLE IN CARBON STEEL, STAINLESS STEEL AND ALUMINUM. CARBON STEEL UNITS ARE PROVIDED WITH ONE PRIME COAT OF PAINT.
- 4.) AVAILABLE WITH FELTED TUBULAR FILTER BAGS OR, SPUN BOND PLEATED ELEMENTS
- 5.) INLET AND OUTLET SIZES WILL BE DETERMINED AND SIZED FOR SPECIFIC APPLICATIONS.
- 6.) HIGH TEMPERATURE DESIGNS AVAILABLE.

This material is the property of INDUSTRIAL ACCESSORIES COMPANY and should not be reproduced, published or disclosed to others without authorization. The material shall not be used in any way against or detrimental to INDUSTRIAL ACCESSORIES COMPANY, Mission, Kansas.

Industrial Accessories Company
4800 LAMAR
MISSION, KS 66202
(913) 384-5511 fax (913) 384-6577

PROJECT: FILTER INFORMATION TABLE – WALK-IN

DESCRIPTION: BAGHOUSE: TOP REMOVAL, 60 SERIES SIZES: 768 TO 960 BAGS MODEL: REFER TO TABLE ABOVE

DATE SENT: 11/11/02

REVD BY: _____

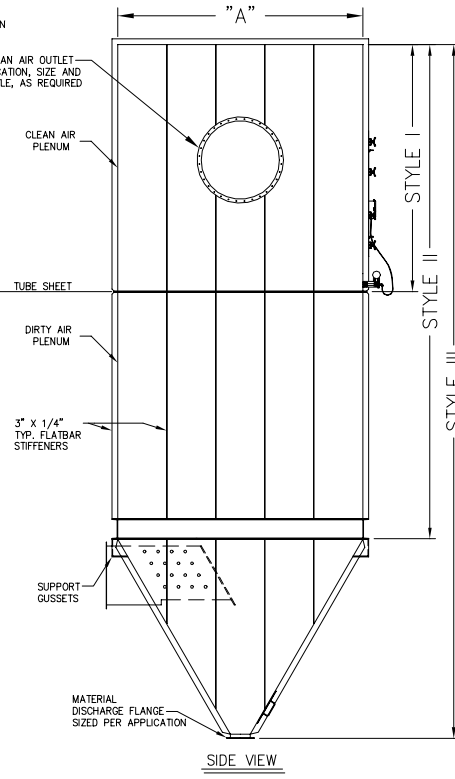
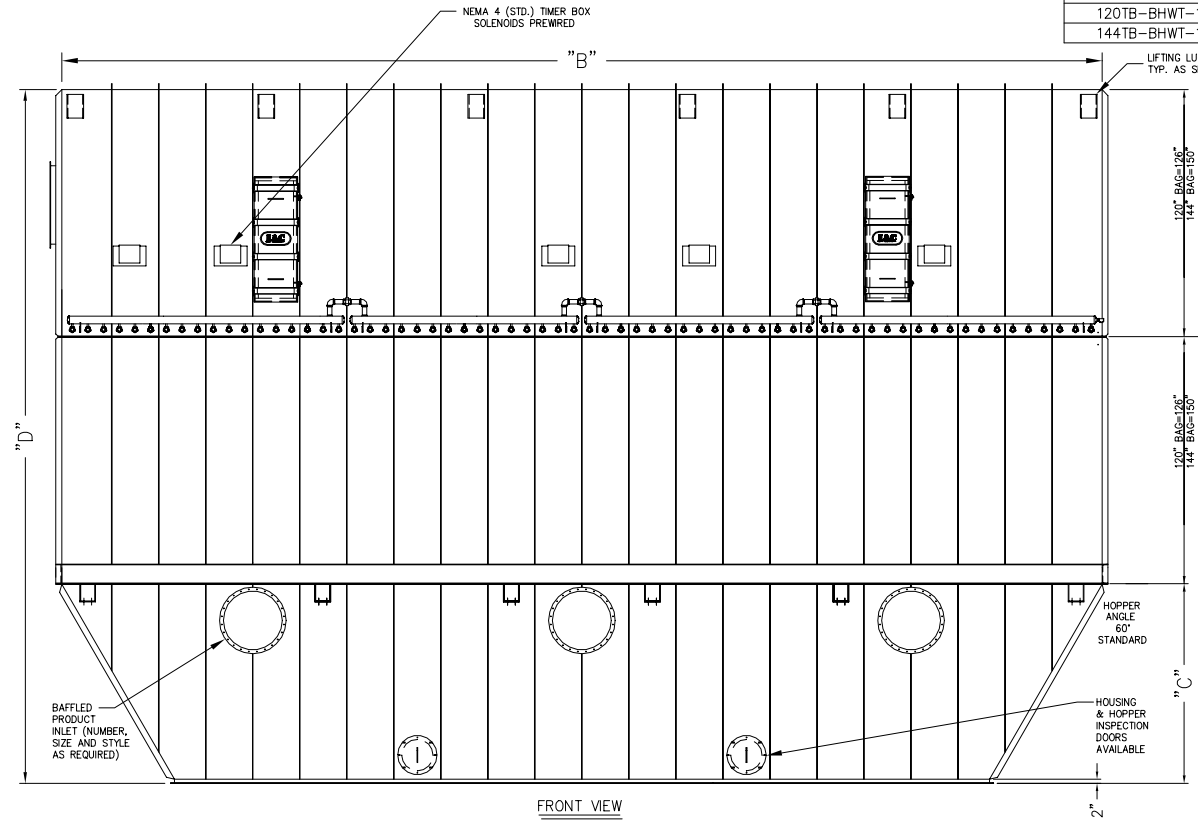
PROPOSAL NO: _____

DRAWING NO: CD317-03



BAGHOUSE – TOP LOAD WALK IN PULSE JET – TUBULAR BAG – STYLE III

MODEL:	FILTER LENGTH (IN.)	FILTER AREA (SQ.FT.)	NOMINAL DIMENSIONS (IN.)				NO. OF VALVES	NO. OF AIR HEADERS	*EST'D SHIP. WT. (LB.)
			HOPPER ANGLE=60°		D (STYLE III)				
			A	B	C				
120TB-BHWT-1056: S6	120"	17107	125"	534"	102"	354"	66	4	38,200
144TB-BHWT-1056: S6	144"	20529	125"	534"	102"	402"	66	4	40,900
120TB-BHWT-1152: S6	120"	18662	125"	582"	102"	354"	72	4	41,600
144TB-BHWT-1152: S6	144"	22395	125"	582"	102"	402"	72	4	44,300
120TB-BHWT-1248: S6	120"	20218	125"	632"	102"	354"	78	5	45,000
144TB-BHWT-1248: S6	144"	24261	125"	632"	102"	402"	78	5	47,700



- * C.S. CONSTRUCTION
60" HOPPER
- NOTES:
- 1.) THIS DRAWING IS NOT CERTIFIED FOR FIELD CONSTRUCTION. USE FOR GENERAL ARRANGEMENT ONLY
 - 2.) STRUCTURALLY DESIGNED TO WITHSTAND 20" W.C. POSITIVE AND NEGATIVE PRESSURE.
 - 3.) AVAILABLE IN CARBON STEEL, STAINLESS STEEL AND ALUMINUM. CARBON STEEL UNITS ARE PROVIDED WITH ONE PRIME COAT OF PAINT.
 - 4.) AVAILABLE WITH FELTED TUBULAR FILTER BAGS OR, SPUN BOND PLEATED ELEMENTS
 - 5.) INLET AND OUTLET SIZES WILL BE DETERMINED AND SIZED FOR SPECIFIC APPLICATIONS.
 - 6.) HIGH TEMPERATURE DESIGNS AVAILABLE.

FRONT VIEW

SIDE VIEW

This material is the property of INDUSTRIAL ACCESSORIES COMPANY and should not be reproduced, published or disclosed to others without authorization. The material shall not be used in any way against or detrimental to INDUSTRIAL ACCESSORIES COMPANY, Mission, Kansas.

IAC
INDUSTRIAL ACCESSORIES COMPANY

Industrial Accessories Company
4800 LAMAR
MISSION, KS 66202
(913) 384-5511 fax (913) 384-6577

PROJECT: FILTER INFORMATION TABLE – WALK-IN	DATE SENT: 11/11/02	LAST REV'D: 11/11/02
DESCRIPTION: BAGHOUSE: TOP REMOVAL, 60 SERIES SIZES: 1056 TO 1248 BAGS MODEL: REFER TO TABLE ABOVE	PART NO.:	PROPOSAL NO.:
DRAWING NO.: CD317-04		