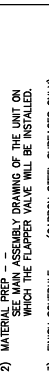
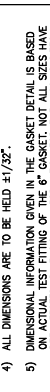


ITEM	DESCRIPTION	QTY
1	DISCHARGE HOOPER TO O.D. H.E.S.	1
2	GASKET WHITE SANTOPRENE, 1 1/8" X 7/8" W/ 1/4" CHANNEL (SEE DETAIL)	1
3	SEAL PLATE 1/8" H.E.S. (SEE DETAIL)	1
4	WEIGHT ARM MOUNTING BRACKET 5/16" H.E.S. (SEE DETAIL)	4
5	WEIGHT ROD 1/2" X 13 H.E.S. (SEE DETAIL)	2
6	WEIGHT ARM 1/4" X 3/4" H.E.S. (SEE DETAIL)	2
7	WEIGHT ARM 1/2" X 1/2" X 1/2" H.E.S. (SEE DETAIL)	4
8	PROXIMITY SWITCH MOUNTING PLATE 7/8" H.E.S. (SEE DETAIL)	1
9	PROXIMITY SWITCH 1/2" X 1/2" H.E.S. (SEE DETAIL)	1
10	PROXIMITY SWITCH MOUNTING PLATE 7/8" H.E.S. (SEE DETAIL)	1
11	SWIVEL ARM 1/2" X 1/4" H.E.S. (SEE DETAIL)	1
12	SWIVEL ARM MOUNTING BRACKET 5/16" H.E.S. (SEE DETAIL)	1
13	VALVE GASKET 6" (SEE DETAIL)	1
14	SEAL PLATE 1/8" H.E.S. (SEE DETAIL)	1

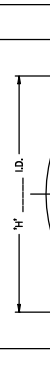
GENERAL NOTES  
 1) WELDING SPECIFICATIONS - ALL WELDS TO BE FULL WELD  
 2) MATERIAL - ALL STEEL  
 3) FINISH - ALL SURFACES TO BE MACHINED  
 4) ALL DIMENSIONS ARE TO BE HELD ±1/32"  
 5) DIMENSIONAL INFORMATION GIVEN IN THE GASKET DETAIL IS BASED ON ACTUAL TEST FITTING OF THE 6" GASKET. NOT ALL SIZES HAVE BEEN TESTED. DIMENSIONAL INFORMATION FOR THE MISSING SIZES WILL BE INCLUDED AS IT BECOMES AVAILABLE.

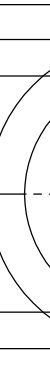
ITEM #1  
 WEIGHT ARM MOUNT DETAIL  


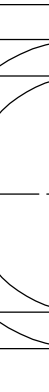
ITEM #2  
 WEIGHT DETAIL  


ITEM #3  
 PROXIMITY SWITCH MOUNTING PLATE DETAIL  


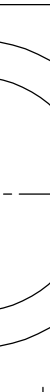
ITEM #4  
 SWIVEL ARM DETAIL  

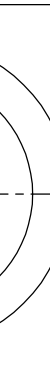

ITEM #5  
 6" VALVE GASKET DETAIL  


ITEM #6  
 SEAL PLATE DETAIL  


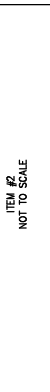
ITEM #7  
 SWIVEL ARM DETAIL  


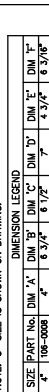
ITEM #8  
 WEIGHT ARM MOUNT DETAIL  

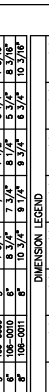

ITEM #9  
 WEIGHT DETAIL  


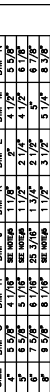
ITEM #10  
 PROXIMITY SWITCH MOUNTING PLATE DETAIL  


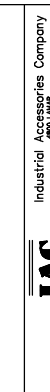
ITEM #11  
 SWIVEL ARM DETAIL  


ITEM #12  
 SWIVEL ARM MOUNTING BRACKET DETAIL  


ITEM #13  
 VALVE GASKET DETAIL  



ITEM #14  
 SEAL PLATE DETAIL  


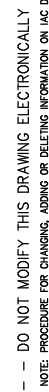
ITEM #15  
 SWIVEL ARM DETAIL  


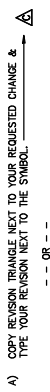
ITEM #16  
 WEIGHT ARM MOUNT DETAIL  


ITEM #17  
 WEIGHT DETAIL  


ITEM #18  
 PROXIMITY SWITCH MOUNTING PLATE DETAIL  

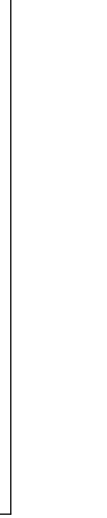
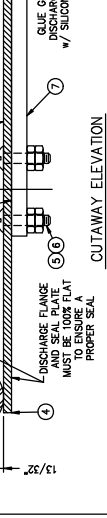
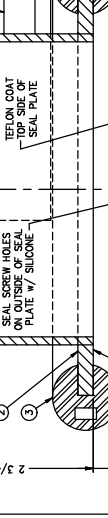
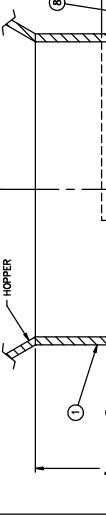
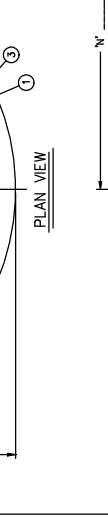
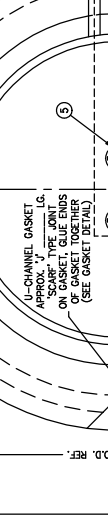
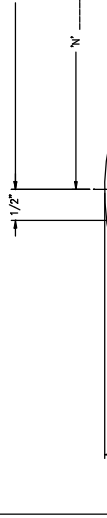
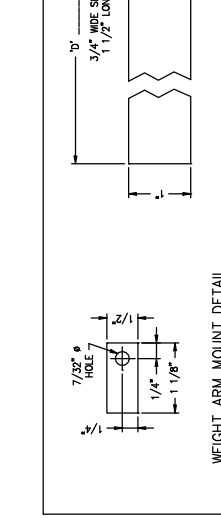
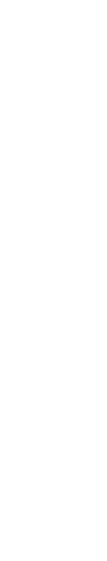
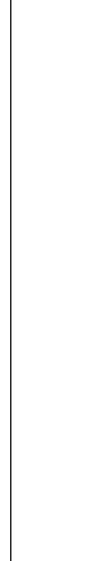
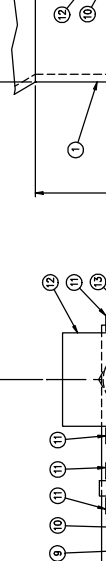
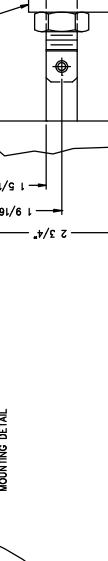
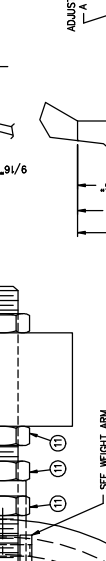
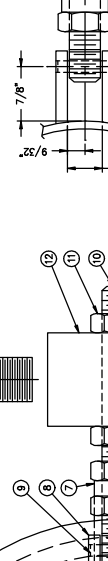
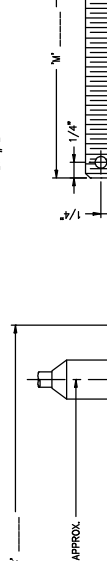
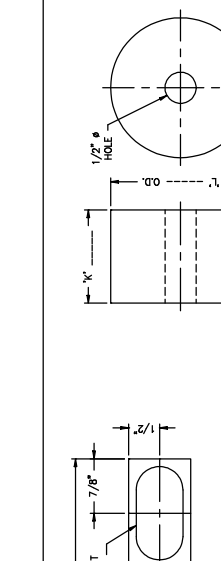
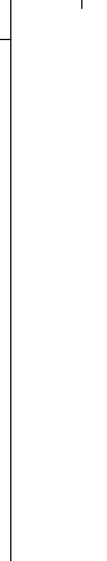
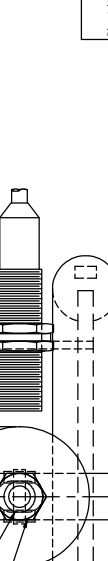
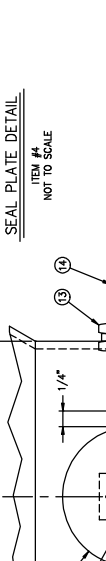
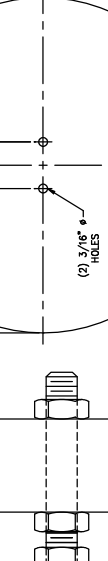
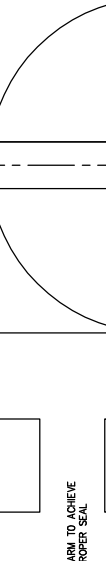
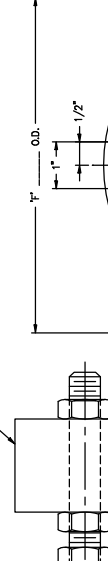
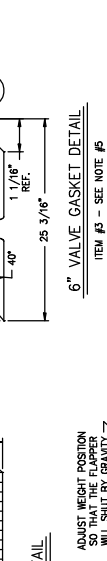
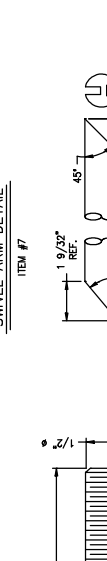
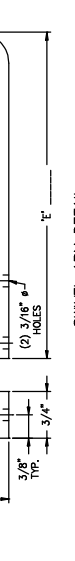
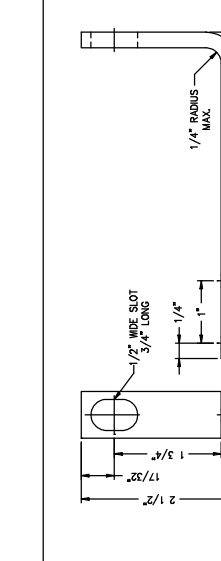

ITEM #19  
 SWIVEL ARM DETAIL  


ITEM #20  
 SWIVEL ARM MOUNTING BRACKET DETAIL  


ITEM #21  
 VALVE GASKET DETAIL  


ITEM #22  
 SEAL PLATE DETAIL  


ITEM #23  
 SWIVEL ARM DETAIL  

NOTE: 5" SIZE IS SHOWN ON DRAWING.  
 NOT TO SCALE

SIZE	PART NO.	DIM. A"	DIM. B"	DIM. C"	DIM. D"	DIM. E"	DIM. F"
4"	106-0008	4"	6 3/4"	6 1/2"	7"	4 1/2"	6 3/16"
5"	106-0009	5"	8 3/4"	8 1/2"	9"	5 1/2"	8 3/16"
6"	106-0010	6"	10 3/4"	10 1/2"	11"	6 1/2"	10 3/16"

SIZE	DIM. G"	DIM. H"	DIM. I"	DIM. J"	DIM. K"	DIM. L"	DIM. M"
4"	5 5/8"	4 1/8"	3 1/2"	1 7/8"	1 1/4"	1 1/2"	5 3/8"
5"	7 5/8"	5 1/8"	4 1/2"	2 1/8"	1 3/4"	1 3/4"	7 3/8"
6"	9 5/8"	6 1/8"	5 1/2"	3 1/8"	2 1/4"	2 1/4"	9 3/8"

INDUSTRIAL ACCESSORIES COMPANY  
 1200 N. LAMAR BLVD.  
 MEMPHIS, TN 38111 (913) 384-8377

IAC STANDARD DRAWING  
 DATE: 5/27/89  
 SEE LEGEND

WHITE GASKET FLAPPER VALVE  
 W/ PROXIMITY SWITCH

106-0008  
 SHT. 1 OF 1

DO NOT MODIFY THIS DRAWING ELECTRONICALLY  
 PROCEDURE FOR CHANGING, ADDING OR DELETING INFORMATION ON IAC DRAWINGS.  
 A) COPY REVISION TRIANGLE NEXT TO YOUR REQUESTED CHANGE & TYPE YOUR REVISION NEXT TO THE SYMBOL.  
 B) REDUCE A HARD COPY OF THIS DRAWING AND NEXT DAY AIR TO IAC.