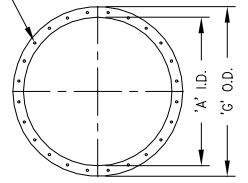


Help Note FILTER RECEIVER - BOTTOM LOAD PULSE JET - TUBULAR BAG - STYLE III

MODEL: ?	FILTER LENGTH (IN.)	FILTER AREA (SQ.FT.)	NOMINAL DIMENSIONS (IN.)												NO. OF VALVES	*TYPE II ESTD SHP WT. (LB.)	*TYPE III ESTD SHP WT. (LB.)
			A			B			C			D					
			(DIA.)	(STYLE I)	(STYLE II)	(DIA.)	(STYLE I)	(STYLE II)	(DIA.)	(STYLE I)	(STYLE II)	(DIA.)	(STYLE I)	(STYLE II)			
36TB-FRIP-7:S6	36"	34	28"	10"	42"	52"	12"	64"	20"	72"	30"	82"	3	360	500		
54TB-FRIP-7:S6	54"	51	28"	10"	60"	70"	12"	82"	20"	90"	30"	100"	3	450	580		
72TB-FRIP-7:S6	72"	68	28"	10"	78"	88"	12"	100"	20"	108"	30"	118"	3	540	750		
84TB-FRIP-7:S6	84"	80	28"	10"	90"	100"	12"	112"	20"	120"	30"	130"	3	690	830		
96TB-FRIP-7:S6	96"	91	28"	10"	102"	112"	12"	124"	20"	132"	30"	142"	3	780	910		
36TB-FRIP-14:S6	36"	68	40"	12"	42"	54"	18"	72"	30"	84"	46"	100"	4	540	830		
54TB-FRIP-14:S6	54"	102	40"	12"	60"	72"	18"	90"	30"	102"	46"	118"	4	710	1010		
72TB-FRIP-14:S6	72"	136	40"	12"	78"	90"	18"	108"	30"	120"	46"	136"	4	890	1180		
84TB-FRIP-14:S6	84"	159	40"	12"	90"	102"	18"	120"	30"	132"	46"	148"	4	1010	1300		
96TB-FRIP-14:S6	96"	182	40"	12"	102"	114"	18"	132"	30"	144"	46"	160"	4	1120	1420		
54TB-FRIP-21:S6	54"	153	46"	12"	60"	72"	21"	93"	35"	107"	54"	126"	5	750	1150		
72TB-FRIP-21:S6	72"	205	46"	12"	78"	90"	21"	111"	35"	125"	54"	144"	5	1020	1420		
96TB-FRIP-21:S6	96"	273	46"	12"	102"	114"	21"	135"	35"	149"	54"	168"	5	1290	1690		
108TB-FRIP-21:S6	108"	307	46"	12"	114"	126"	21"	147"	35"	161"	54"	180"	5	1430	1820		
120TB-FRIP-21:S6	120"	341	46"	12"	126"	138"	21"	159"	35"	173"	54"	192"	5	1560	1960		

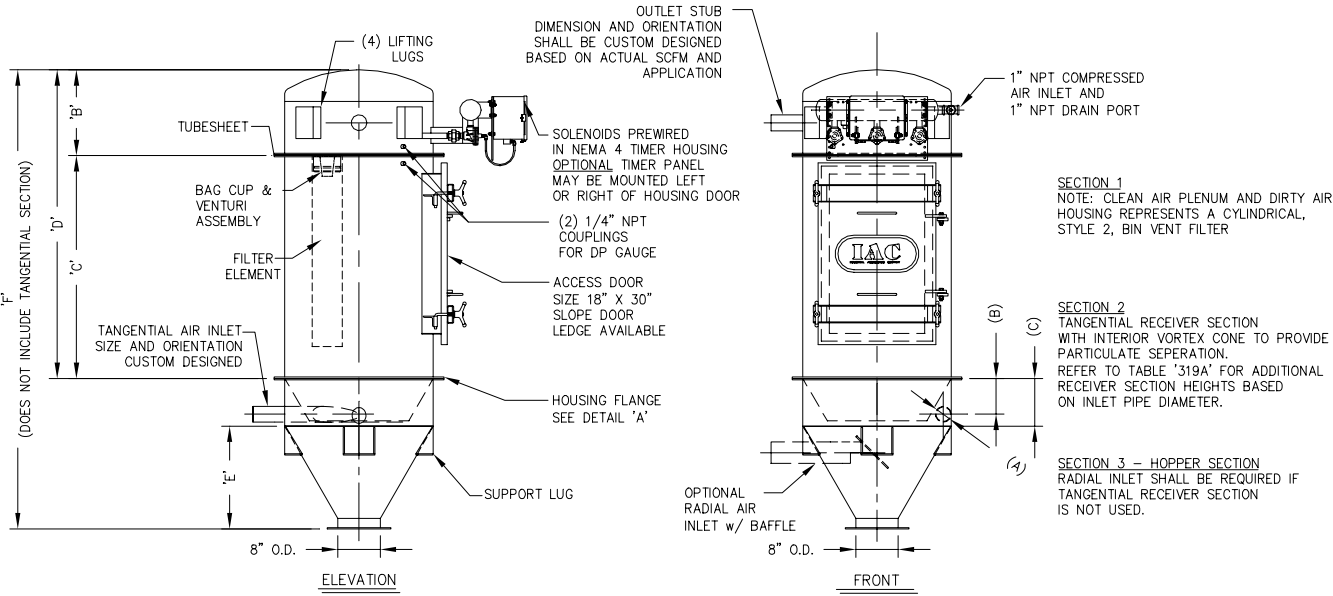
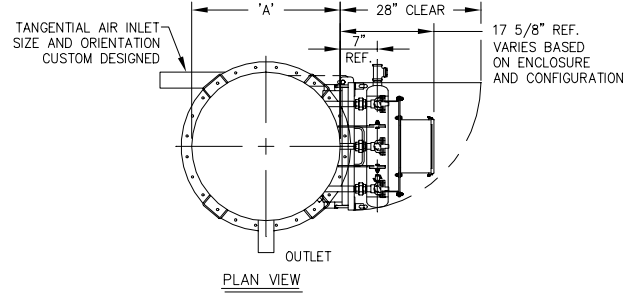
* C.S. CONSTRUCTION 60° CONE

'H' 7/16" Ø BOLT HOLES EVENLY SPACED ON 'J' D.B.C.



HOUSING FLANGE DETAIL 'A'

NO. OF BAGS	DIMENSIONS (IN.)			QTY
	A	G	J	H
7	28"	32"	30"	24
14	40"	44"	42"	32
21	46"	50"	48"	36



GENERAL NOTES: FILTER SPECIFICATIONS FOR STANDARD MODELS

- Design Pressure: Square/Rectangular units: ± 20" W.C. standard design pressure
Cylindrical (Round) units: 17" Hg design vacuum; up to 14.9 PSIG pressure
- Air Pressure Requirement: 70 to 120 PSIG
- Prewired and Prepped at factory
- Efficiency: 0.02 grs/DSCF maximum outlet emission
- Tubular style unit uses a standard 6.0" diameter filter bag; this design is shown on G.A. drawing
- Power Requirements; 120V, 1 Ph, 60 HZ
- Casing Construction: 12 ga. up to 1/4" plate depending on pressure rating and application
- Tubsheet Construction: 3/16" thick, carbon steel; 1/4" x 5" stiffeners
- Stiffeners: 1/4" x 3" Flat Bar, carbon steel
- Flanges and Rings: 1/4" x 2" Flat Bar, carbon steel
- 100% Galvanized, 12 wire, corrosion resistant bag support cages
- Painted Surfaces Metal Prep: Solvent wiped- SSPC- SP1; and, Power tool cleaned SSPC- SP3
- Exterior Surfaces: 2 coats; 1 epoxy 2-part primer and 1 finish coat of high solids industrial enamel
- 100% Exterior Welded; ASME certified weld specifications and procedures
- 1/4" Black Nylon or Copper Interconnecting Tubing
- Asco or Goyen Pulse Valves- cast aluminum
- Hardware- Grade 5, plated; silicone caulk provided
- Tubsheet is removable; bolted between upper and lower flanges; over 330 bags, tubsheet is seal welded to casing
- Diaphragm Pulse Valve Sizes: 3 rows up to 6 rows- 3/4" diaphragm
7 rows and greater- 1 1/2" double diaphragm valve
- NEMA 4, dust and watertight, electrical instruments and panels
- Air Pressure Gauge- 0 to 150 PSIG
- Aluminum Bulkhead Fittings
- IAC Side (Bottom) Load and Walk-In CAP design units
Doors Dimensions :18" width by "x" Height; Standard Heights: 30", 38", 60", and 72"
- Top Door Style Units: Lift-Off Doors with Top Deck Full Perimeter Handrail and 4" Kickplate
- Top Load Style Units: Inspection Door located in Hopper (Style 3) or Housing (Style 2)
Standard Sizes: 10", 16", 20", and 24" diameter
- "DP" Differential Pressure Gauge (Magnehelic)
- Sloped Roof- Top Door Style Units
- Door hold down assembly stud on top door units shall be 304 SST
- Drawing to be used for Lay-Out and Engineering purposes only.
- Style 3 (Hopper Section) Discharge - Optional Sizes Available

# OF ELEMENTS	7	14	21	32	48	58	65	80	102	133	164
A	3"	3"	4"	5"	6"	6"	8"	8"	10"	10"	10"
B	6 1/4"	6 1/4"	8 3/4"	10 3/16"	11 11/16"	11 11/16"	15 11/16"	15 11/16"	19 5/8"	19 5/8"	19 5/8"
C	9"	9"	12"	14"	16"	16"	21"	21"	26"	26"	26"

This material is the property of INDUSTRIAL ACCESSORIES COMPANY and should not be reproduced, published or disclosed to others without authorization. The material shall not be used in any way against or detrimental to INDUSTRIAL ACCESSORIES COMPANY, Mission, Kansas.

Industrial Accessories Company
4800 LAMAR
MISSION, KS 66202
(913) 384-5511 fax (913) 384-6577

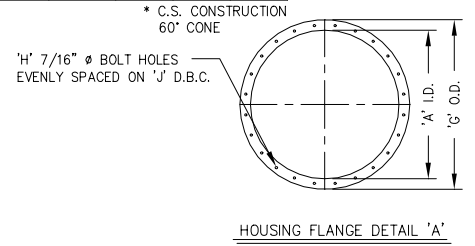
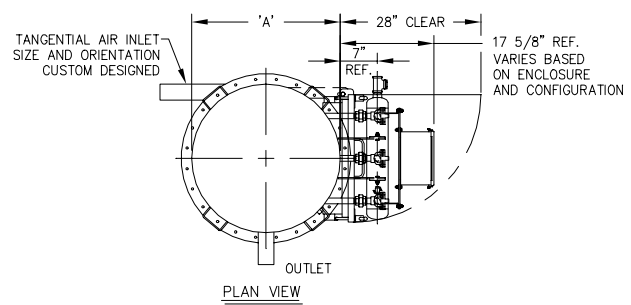
PROJECT: FILTER INFORMATION TABLE	DATE SENT: _____	LAST REV'D: 11/11/02
DESCRIPTION: FILTER RECEIVER: SIDE REMOVAL, 60 SERIES SIZES: 7 TO 21 BAGS MODEL: REFER TO TABLE ABOVE	PART NO. _____	PROPOSAL NO. _____
DRAWING NO. CD319-01		

Help note FILTER RECEIVER – BOTTOM LOAD PULSE JET – TUBULAR BAG – STYLE III

GENERAL NOTES: FILTER SPECIFICATIONS FOR STANDARD MODELS

MODEL:	FILTER LENGTH (IN.)	FILTER AREA (SQ.FT.)	NOMINAL DIMENSIONS (IN.)												NO. OF VALVES	*TYPE II ESTD SHIP WT. (LB.)	*TYPE III ESTD SHIP WT. (LB.)
			A (DIA.)	B (STYLE I)	C	D (STYLE II)	M	HOPPER ANGLE=45°		HOPPER ANGLE=60°		HOPPER ANGLE=70°					
								E	F (STYLE III)	E	F (STYLE III)	E	F (STYLE III)				
54TB-FRIP-32:S6	54"	234	60"	12"	60"	72"	10 3/4"	28"	110 3/4"	47"	129 3/4"	74"	156 3/4"	6	1130	1850	
72TB-FRIP-32:S6	72"	312	60"	12"	78"	90"	10 3/4"	28"	128 3/4"	47"	147 3/4"	74"	174 3/4"	6	1390	2080	
96TB-FRIP-32:S6	96"	416	60"	12"	102"	114"	10 3/4"	28"	152 3/4"	47"	171 3/4"	74"	198 3/4"	6	1750	2440	
120TB-FRIP-32:S6	120"	519	60"	12"	126"	138"	10 3/4"	28"	176 3/4"	47"	195 3/4"	74"	222 3/4"	6	2100	2790	
132TB-FRIP-32:S6	132"	571	60"	12"	138"	150"	10 3/4"	28"	188 3/4"	47"	207 3/4"	74"	234 3/4"	6	2270	2970	
72TB-FRIP-48:S6	72"	467	66"	12"	78"	90"	11 9/16"	31"	132 9/16"	52"	153 9/16"	82"	183 9/16"	8	1540	2390	
96TB-FRIP-48:S6	96"	623	66"	12"	102"	114"	11 9/16"	31"	156 9/16"	52"	177 9/16"	82"	207 9/16"	8	1930	2750	
120TB-FRIP-48:S6	120"	779	66"	12"	126"	138"	11 9/16"	31"	180 9/16"	52"	201 9/16"	82"	231 9/16"	8	2320	3160	
132TB-FRIP-48:S6	132"	857	66"	12"	138"	150"	11 9/16"	31"	192 9/16"	52"	213 9/16"	82"	243 9/16"	8	2520	3360	
144TB-FRIP-48:S6	144"	935	66"	12"	150"	162"	11 9/16"	31"	204 9/16"	52"	225 9/16"	82"	255 9/16"	8	2710	3550	
96TB-FRIP-58:S6	96"	753	72"	18"	102"	120"	12 3/8"	34"	166 3/8"	58"	190 3/8"	90"	222 3/8"	8	2215	3215	
108TB-FRIP-58:S6	108"	847	72"	18"	114"	132"	12 3/8"	34"	178 3/8"	58"	202 3/8"	90"	234 3/8"	8	2425	3445	
120TB-FRIP-58:S6	120"	941	72"	18"	126"	144"	12 3/8"	34"	190 3/8"	58"	214 3/8"	90"	246 3/8"	8	2635	3665	
144TB-FRIP-58:S6	144"	1130	72"	18"	150"	168"	12 3/8"	34"	214 3/8"	58"	238 3/8"	90"	270 3/8"	8	3055	4085	

- Design Pressure: Square/Rectangular units: ± 20" W.C. standard design pressure
Cylindrical (Round) units: 17" Hg design vacuum; up to 14.9 PSIG pressure
- Air Pressure Requirement: 70 to 120 PSIG
- Prewired and Prewired at factory
- Efficiency: 0.02 grs/DSCF maximum outlet emission
- Tubular style unit uses a standard 6.0" diameter filter bag; this design is shown on G.A. drawing
- Power Requirements; 120V, 1 Ph, 60 HZ
- Casing Construction: 12 ga. up to 1/4" plate depending on pressure rating and application
- Tube-sheet Construction: 3/16" thick, carbon steel; 1/4" x 5" stiffeners
- Stiffeners: 1/4" x 3" Flat Bar, carbon steel
- Flanges and Rings: 1/4" x 2" Flat Bar, carbon steel
- 100% Galvanized, 12 wire, corrosion resistant bag support cages
- Painted Surfaces Metal Prep: Solvent wiped- SSPC- SP1; and, Power tool cleaned SSPC- SP3
- Exterior Surfaces: 2 coats; 1 epoxy 2-part primer and 1 finish coat of high solids industrial enamel
- 100% Exterior Welded; ASME certified weld specifications and procedures
- 1/4" Black Nylon or Copper Interconnecting Tubing
- Asco or Gasten Pulse Valves- cast aluminum
- Hardware- Grade 5, plated; silicone caulk provided
- Tube-sheet is removable; bolted between upper and lower flanges; over 330 bags, tube-sheet is seal welded to casing
- Diaphragm Pulse Valve Sizes: 3 rows up to 6 rows- 3/4" diaphragm 7 rows and greater- 1 1/2" double diaphragm valve
- NEMA 4, dust and watertight, electrical instruments and panels
- Air Pressure Gauge- 0 to 150 PSIG
- Aluminum Bulkhead Fittings
- IAC Side (Bottom) Load and Walk-In CAP design units
Doors Dimensions : 18" width by "x" Height; Standard Heights: 30", 38", 60", and 72"
- Top Door Style Units: Lift-Off Doors with Top Deck Full Perimeter Handrail and 4" Kickplate
- Top Load Style Units: Inspection Door located in Hopper (Style 3) or Housing (Style 2)
Standard Sizes: 10", 16", 20", and 24" diameter
- "DP" Differential Pressure Gauge (Magnehelic)
- Sloped Roof- Top Door Style Units
- Door hold down assembly stud on top door units shall be 304 SST
- Drawing to be used for Lay-Out and Engineering purposes only.
- Style 3 (Hopper Section) Discharge - Optional Sizes Available



* C.S. CONSTRUCTION 60" CONE

STYLE II (HOUSING) FLANGE PATTERN					
NO. OF BAGS	DIMENSIONS (IN.)				QTY
	A	G	J	H	
32	60"	64"	62"	48"	8
48	66"	70"	68"	52"	8
58	72"	76"	74"	60"	8

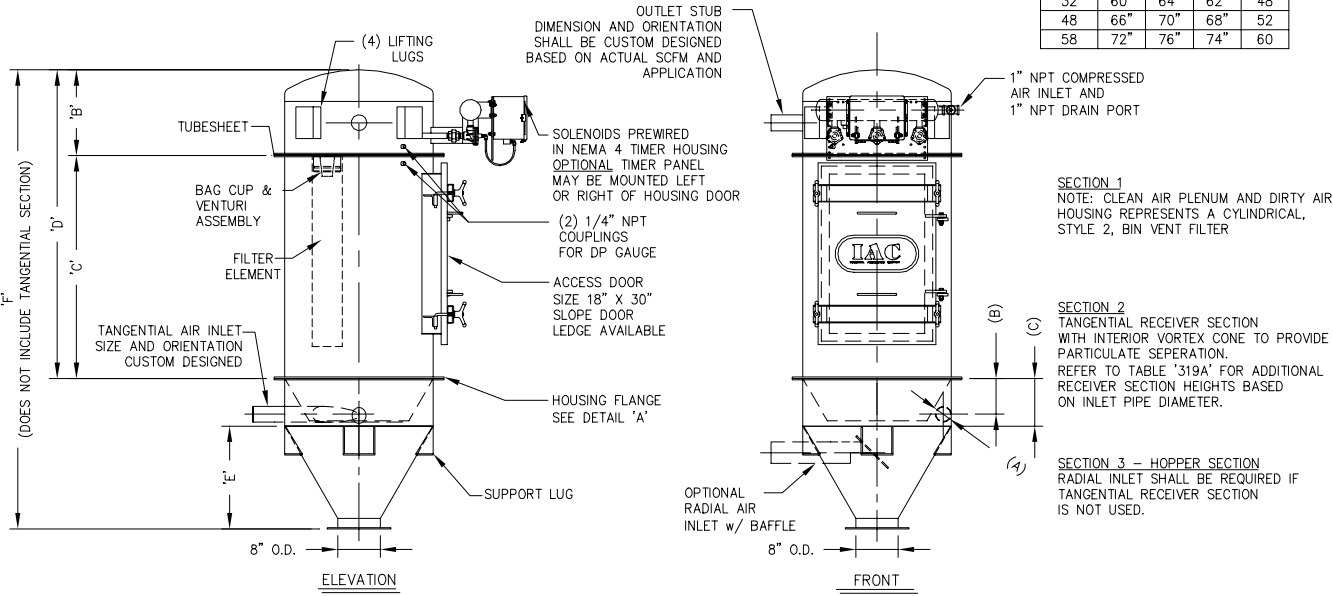


TABLE 319A TANGENTIAL RECEIVER SECTION - DIMENSIONAL TABLE												
# OF ELEMENTS	7	14	21	32	48	58	65	80	102	133	164	
A	3"	3"	4"	5"	6"	6"	8"	8"	10"	10"	10"	
B	6 1/4"	6 1/4"	8 3/4"	10 3/16"	11 11/16"	11 11/16"	15 11/16"	15 11/16"	19 5/8"	19 5/8"	19 5/8"	
C	9"	9"	12"	14"	16"	16"	21"	21"	26"	26"	26"	

This material is the property of INDUSTRIAL ACCESSORIES COMPANY and should not be reproduced, published or disclosed to others without authorization. The material shall not be used in any way against or detrimental to INDUSTRIAL ACCESSORIES COMPANY, Mission, Kansas.

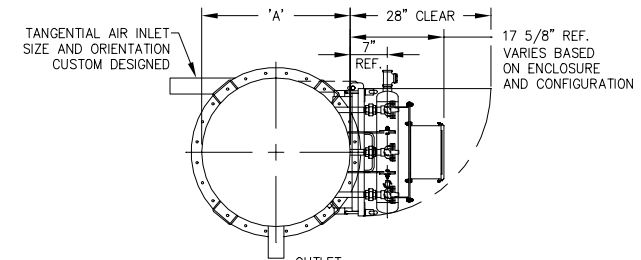
IAC Industrial Accessories Company
4800 LAMAR
MISSION, KS 66202
(913) 384-5511 fax (913) 384-6577

PROJECT	DATE SENT	LAST REV'D
FILTER INFORMATION TABLE		11/11/02
DESCRIPTION	PART NO.	PROPOSAL NO.
FILTER RECEIVER: SIDE REMOVAL, 60 SERIES SIZES: 32 TO 58 BAGS MODEL: REFER TO TABLE ABOVE		
	DRAWING NO.	
	CD319-02	

Help note FILTER RECEIVER - BOTTOM LOAD PULSE JET - TUBULAR BAG - STYLE III

MODEL:	FILTER LENGTH (IN.)	FILTER AREA (SQ.FT.)	NOMINAL DIMENSIONS (IN.)												NO. OF VALVES	*TYPE II EST'D SHIP WT. (LB.)	*TYPE III EST'D SHIP WT. (LB.)
			A (DIA.)	B (STYLE I)	C	D (STYLE II)	M	HOPPER ANGLE=45°		HOPPER ANGLE=60°		HOPPER ANGLE=70°					
						E	F (STYLE III)	E	F (STYLE III)	E	F (STYLE III)	E	F (STYLE III)				
96TB-FRIP-65:S6	96"	844	78"	18"	102"	120"	12 1/2"	37"	169 1/2"	63"	195 1/2"	98"	230 1/2"	9	2415	3615	
120TB-FRIP-65:S6	120"	1055	78"	18"	126"	144"	12 1/2"	37"	193 1/2"	63"	219 1/2"	98"	254 1/2"	9	2865	4075	
132TB-FRIP-65:S6	132"	1161	78"	18"	138"	156"	12 1/2"	37"	205 1/2"	63"	231 1/2"	98"	266 1/2"	9	3095	4305	
144TB-FRIP-65:S6	144"	1266	78"	18"	150"	168"	12 1/2"	37"	217 1/2"	63"	243 1/2"	98"	278 1/2"	9	3325	4535	
96TB-FRIP-80:S6	96"	1039	84"	24"	102"	126"	14"	40"	180"	68"	208"	107"	247"	10	2715	4125	
120TB-FRIP-80:S6	120"	1299	84"	24"	126"	150"	14"	40"	204"	68"	232"	107"	271"	10	3215	4715	
132TB-FRIP-80:S6	132"	1428	84"	24"	138"	162"	14"	40"	216"	68"	244"	107"	283"	10	3465	4865	
144TB-FRIP-80:S6	144"	1558	84"	24"	150"	174"	14"	40"	228"	68"	256"	107"	295"	10	3705	5105	
120TB-FRIP-102:S6	120"	1656	96"	24"	126"	150"	15 5/8"	46"	211 5/8"	78"	243 5/8"	123"	288 5/8"	11	3680	5520	
132TB-FRIP-102:S6	132"	1821	96"	24"	138"	162"	15 5/8"	46"	223 5/8"	78"	255 5/8"	123"	300 5/8"	11	3960	5800	
144TB-FRIP-102:S6	144"	1987	96"	24"	150"	174"	15 5/8"	46"	235 5/8"	78"	267 5/8"	123"	312 5/8"	11	4250	6080	
120TB-FRIP-133:S6	120"	2159	108"	30"	126"	156"	17 1/4"	52"	225 1/4"	89"	262 1/4"	140"	313 1/4"	13	4300	6660	
144TB-FRIP-133:S6	144"	2591	108"	30"	150"	180"	17 1/4"	52"	249 1/4"	89"	286 1/4"	140"	337 1/4"	13	4940	7300	
168TB-FRIP-133:S6	168"	3022	108"	30"	174"	204"	17 1/4"	52"	273 1/4"	89"	310 1/4"	140"	361 1/4"	13	5570	7930	
120TB-FRIP-164:S6	120"	2662	120"	30"	126"	156"	18 3/4"	58"	232 3/4"	99"	273 3/4"	156"	330 3/4"	14	5030	7950	
144TB-FRIP-164:S6	144"	3194	120"	30"	150"	180"	18 3/4"	58"	256 3/4"	99"	297 3/4"	156"	354 3/4"	14	5740	8650	
168TB-FRIP-164:S6	168"	3727	120"	30"	174"	204"	18 3/4"	58"	280 3/4"	99"	321 3/4"	156"	378 3/4"	14	6440	9360	

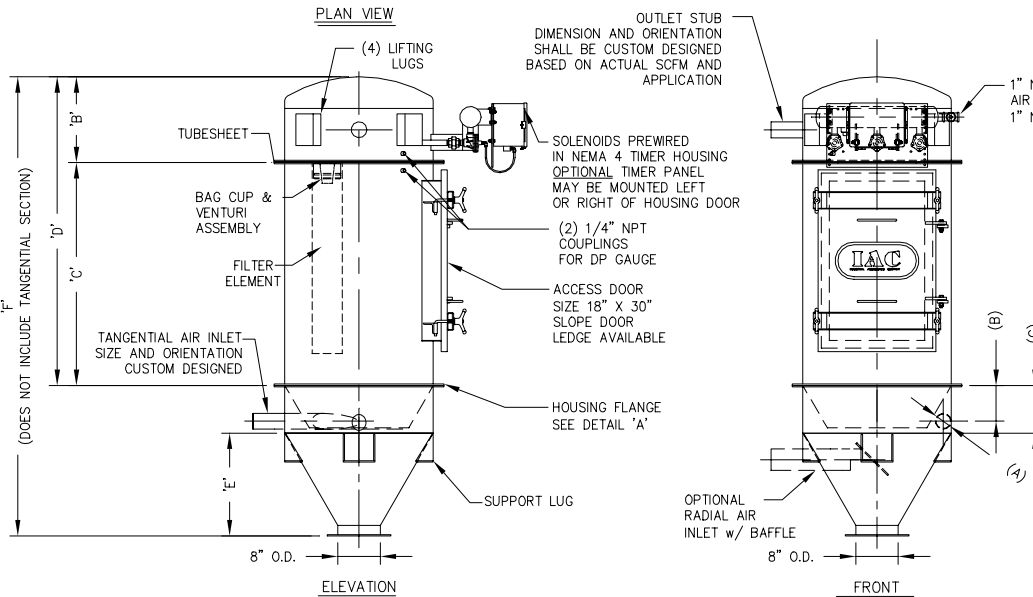
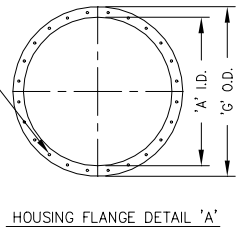
* C.S. CONSTRUCTION 60° CONE



'H' 7/16" Ø BOLT HOLES EVENLY SPACED ON 'J' D.B.C.

STYLE II (HOUSING) FLANGE PATTERN

NO. OF BAGS	DIMENSIONS (IN.)				QTY
	A	G	J	H	
65	78"	82"	80"	64	64
80	84"	88"	86"	68	68
102	96"	100"	98"	76	76
133	108"	112"	110"	88	88
164	120"	124"	122"	96	96



1" NPT COMPRESSED AIR INLET AND 1" NPT DRAIN PORT

SECTION 1 NOTE: CLEAN AIR PLENUM AND DIRTY AIR HOUSING REPRESENTS A CYLINDRICAL, STYLE 2, BIN VENT FILTER

SECTION 2 TANGENTIAL RECEIVER SECTION WITH INTERIOR VORTEX CONE TO PROVIDE PARTICULATE SEPARATION. REFER TO TABLE '319A' FOR ADDITIONAL RECEIVER SECTION HEIGHTS BASED ON INLET PIPE DIAMETER.

SECTION 3 - HOPPER SECTION RADIAL INLET SHALL BE REQUIRED IF TANGENTIAL RECEIVER SECTION IS NOT USED.

GENERAL NOTES: FILTER SPECIFICATIONS FOR STANDARD MODELS

- Design Pressure: Square/Rectangular units: ± 20" W.C. standard design pressure
Cylindrical (Round) units: 17" Hg design vacuum; up to 14.9 PSIG pressure
- Air Pressure Requirement: 70 to 120 PSIG
- Prewired and Prewired at factory
- Efficiency: 0.02 grs/DSCF maximum outlet emission
- Tubular style unit uses a standard 6.0" diameter filter bag; this design is shown on G.A. drawing
- Power Requirements; 120V, 1 Ph, 60 HZ
- Casing Construction: 12 ga. up to 1/4" plate depending on pressure rating and application
- Tubeshet Construction: 3/16" thick, carbon steel; 1/4" x 5" stiffeners
- Stiffeners: 1/4" x 3" Flat Bar, carbon steel
- Flanges and Rings: 1/4" x 2" Flat Bar, carbon steel
- 100% Galvanized, 12 wire, corrosion resistant bag support cages
- Painted Surfaces Metal Prep: Solvent wiped- SSPC- SP1; and, Power tool cleaned SSPC- SP3
- Exterior Surfaces: 2 coats; 1 epoxy 2-part primer and 1 finish coat of high solids industrial enamel
- 100% Exterior Welded; ASME certified weld specifications and procedures
- 1/4" Black Nylon or Copper Interconnecting Tubing
- Asco or Goyen Pulse Valves- cast aluminum
- Hardware- Grade 5, plated; silicone caulk provided
- Tubeshet is removable; bolted between upper and lower flanges; over 330 bags, tubeshet is seal welded to casing
- Diaphragm Pulse Valve Sizes: 3 rows up to 6 rows- 3/4" diaphragm 7 rows and greater- 1 1/2" double diaphragm valve
- NEMA 4, dust and watertight, electrical instruments and panels
- Air Pressure Gauge- 0 to 150 PSIG
- Aluminum Bulkhead Fittings
- IAC Side (Bottom) Load and Walk-In CAP design units
Doors Dimensions :18" width by "x" Height; Standard Heights: 30", 38", 60", and 72"
- Top Door Style Units: Lift-Off Doors with Top Deck Full Perimeter Handrail and 4" Kickplate
- Top Load Style Units: Inspection Door located in Hopper (Style 3) or Housing (Style 2)
Standard Sizes: 10", 16", 20", and 24" diameter
- "DP" Differential Pressure Gauge (Magnehelic)
- Sloped Roof- Top Door Style Units
- Door hold down assembly stud on top door units shall be 304 SST
- Drawing to be used for Lay-Out and Engineering purposes only.
- Style 3 (Hopper Section) Discharge - Optional Sizes Available

TABLE 319A TANGENTIAL RECEIVER SECTION - DIMENSIONAL TABLE

# OF ELEMENTS	7	14	21	32	48	58	65	80	102	133	164
A	3"	3"	4"	5"	6"	6"	8"	8"	10"	10"	10"
B	6 1/4"	6 1/4"	8 3/4"	10 3/16"	11 11/16"	11 11/16"	15 11/16"	15 11/16"	19 5/8"	19 5/8"	19 5/8"
C	9"	9"	12"	14"	16"	16"	21"	21"	26"	26"	26"

This material is the property of INDUSTRIAL ACCESSORIES COMPANY and should not be reproduced, published or disclosed to others without authorization. The material shall not be used in any way against or detrimental to INDUSTRIAL ACCESSORIES COMPANY, Mission, Kansas.

IAC Industrial Accessories Company
4800 LAMAR
MISSION, KS 66202
(913) 384-5511 fax (913) 384-6577

PROJECT: FILTER INFORMATION TABLE
DESCRIPTION: FILTER RECEIVER: SIDE REMOVAL, 60 SERIES SIZES: 65 TO 164 BAGS MODEL: REFER TO TABLE ABOVE

DATE SENT: 11/11/02
LAST REV'D: 11/11/02
REVD BY:
PART NO.:
PROPOSAL NO.:
DRAWING NO.: CD319-03